

## An old foe comes back to haunt diamondmen

— Bucs fall from tournament, state rank. See page 11.

## The complete results of Tuesday's election

— See the back page of this section for the breakdown.

# the Belleville times/news

Vol. 70, No. 22

Copyright Frank A. Orechio, 1979

Thursday, May 10, 1979

246 Washington Ave., Belleville, N.J. 07109

759-3200

Second class postage paid at Newark, N.J. (USPS 049-220)

35c

## Marotti tops vote for commission; Pica elected to fill fifth board seat



**New Commissioner** — Matthew Pica gets the good word at his headquarters on Washington Avenue as an exultant campaign worker looks on. The School Board president garnered 3,467 votes and ran third. It is widely expected that he will become the town's new public safety commissioner.



**Voters' Favorite** — Mayor Michael Marotti (third from left) received 4,496 to lead the field of 16 candidates in Tuesday's commission election. With Marotti at the AMVETS Hall (l-r) are brother John, son Rocco, wife Esther and daughters Rosemarie and Michele. The mayor's daughter, Celli, is not pictured.

Belleville residents Tuesday gave the highest number of their steadily decreasing total of votes to Mayor Michael Marotti and a surprisingly low number to Public Works Commissioner Mary Senatore.

Marotti was elected to his third four-year term on the Board of Commissioners with 4,496 votes. He was followed by Public Affairs Commissioner Vincent Strumolo with 3,666 votes. School Board President Matthew Pica with 3,467, Finance Commissioner Joseph McGreevy with 3,420 and Mrs. Senatore with 3,371.

The fact that the four incumbents and the popular Pica were elected did not surprise most observers, nor did the fact that Marotti once again received by far the most votes. It was

Mrs. Senatore's last-place finish among the top five that had crowds at all the campaign headquarters buzzing.

"They tried to mop me out because I'm a woman, but I did it," said tearful Mrs. Senatore Tuesday night in tones more subdued than triumphal. She had campaigned exceptionally hard and few had picked her to finish lower than fourth. A good showing in Strumolo's home Silver Lake District was, however, the only bright spot for her in an otherwise disappointing night.

The lower than expected vote for Mrs. Senatore fueled speculation that her political influence would be diminished and that Pica, a Democrat, might eventually chal-

### How Belleville voted Tuesday

No.	Candidate	Ward I	Ward II	Absentee	Totals
1-A	Guglicelli	295	223	14	532
2-A	Gulder	706	809	28	1543
3-A	Yeamans	549	647	15	1211
4-A	Biase	311	240	18	569
5-A	Fornarotto	1013	892	24	1929
6-A	Strumolo	1883	1714	69	3666
7-A	Granese	296	189	17	502
8-A	Kennedy	322	326	17	665
9-A	Senatore	1616	1665	90	3371
10-A	Pizzi	1465	1207	41	2713
11-A	McGreedy	1622	1711	87	3420
12-A	DiNicola	564	482	27	1073
13-A	Pica	1712	1693	62	3467
14-A	Romeo	798	867	25	1690
15-A	Capezzera	136	156	12	304
16-A	Marotti	2221	2205	70	4496

lenge her leadership of the town party.

Marotti, celebrating with a jubilant crowd at the AMVETS Hall Tuesday, refused to call his continuation as mayor a certainty. Marotti became mayor in 1975 with the key backing of Strumolo and McGreevy. Election night, Strumolo expressed an interest in becoming mayor when commissioners hold their reorganizational meeting Tuesday noon at Town Hall.

"I would like it," Strumolo told The Times/News Tuesday. "I certainly wouldn't refuse it."

So far, it appears the incumbent commissioners will continue to head the departments they now do, with Pica becoming public safety director,

a post vacated by Rocco Saletta who chose not to run for re-election.

If Mrs. Senatore had a personal disappointment Tuesday, she also shared another in common with the other candidates. Of Belleville's 17,440 registered voters, only 7,646 or 43.8 percent, chose to visit the polls. That was a decline from 1975 when 50 percent had voted, and the 1975 figure had represented a drop from 1971.

By comparison with the last election, Marotti was actually Tuesday's biggest loser, receiving 2,205 fewer votes than in 1975. Strumolo's total, dropped by 1,849, Mrs. Senatore's by 1,677 and McGreevy's by 655.

"I'm very disappointed with the Please see 'Pizzi' on page 10.



**Another Term** — Finance Commissioner Joseph McGreevy finished fourth Tuesday with 3,420 votes. Pictured at the Knights of Columbus Senatore watches workers total the votes Tuesday at the Chandelier Hall here are the commissioner's nephew, James (crouched in front), Restaurant, Mrs. Senatore finished a disappointing fifth in the race, Barbara Metz, Jane and Joseph McGreevy and their son, Michael, trailing McGreevy whom she had topped in the last election.



**The Runner-Up** — Helen Strumolo flashes a victory sign as she and her husband, Public Affairs Commissioner Vincent Strumolo, celebrate his re-election Tuesday. Strumolo had 3,666 votes to finish second in the balloting. Tuesday, he expressed an interest in being mayor.

# First DeWitt Savings celebrates opening of dual drive-in facility

John P. Dailey, chairman, and Henrik Tvedt, president of First DeWitt Savings were co-hosts for a celebration of the opening of dual drive-in facilities at the association's main office on Washington Avenue April 25. Mayor Michael Marotti of

Belleville officiated at the ribbon-cutting ceremonies with Dailey, Tvedt, members of the Belleville Commission and directors and officers of First DeWitt.

Denise Preuster of Leslie Terrace in Belleville was the first customer to

use the new First DeWitt drive-in facility after the ribbon-cutting ceremony and was awarded a Regal Coffee Miser as a special early bird drive-in prize for being on the spot at such an opportune time. Miss Preuster said she was a frequent user

of the drive-in and welcomed expansion of the facility to speed up her financial transactions. Miss Preuster is a lifelong resident of Belleville and attended St. Peter's Grammar School and Queen of Peace High School in North Arlington. She is a prospective June bride and will be married to George Lewis of North Arlington.

Dailey said that the continuing growth and rising trend of customer activity at First DeWitt's main office made expansion mandatory. "We have experienced in the past year a 30 percent increase in activity in transactions, both walk-in and drive-in," he said. "It's been the long-standing policy of our association to keep several steps ahead of our various servicing requirements for the convenience and good will of our customers, and this is just one more manifestation of the continuation of this policy."

Marotti congratulated the management of First DeWitt for its foresight in making the added convenience available to its customers. "I've noted with pleasure," he said, "that First DeWitt has been historically a leader in offering maximum convenience and friendliness at all times to the people in our community. As the town has grown, so have the financial services available at First DeWitt expanded to meet and exceed the growth of the area."

Tvedt said the new facility will effectively speed up transactions and eliminate waiting time at the drive-in window. "At the peak periods," he said, "two tellers will be available to handle the increased traffic. At moderate periods, one teller will be able to handle one or two cars with no delay."

"The facility," Tvedt continued, "is the most modern and scientific system available of its type. Designed and built by the Mosler Safe Company, it reflects the finest, fastest and most consistently reliable features available to any financial institution. It's the ideal addition to our everyday activities and a natural in customer convenience," Tvedt concluded.



**His Honor Does Honors** — Mayor Michael Marotti cuts the ribbon to inaugurate the opening of First DeWitt's dual drive-in facility at the main office at 463 Washington Ave. April 25. From left are First DeWitt President Henrik Tvedt, Commissioners Vincent Strumolo and Joseph McGreevy, Mayor Marotti, First DeWitt Chairman John P. Dailey, Commissioner Mary Senatore and Planning Board Chairman Joseph Grande.

PICKUPS DOOR TO DOOR  
**ARROWHEAD  
DAY CAMP**  
BOYS-GIRLS  
5-14 YRS.

William Farkas  
● Adult Supervision —  
● All Sports ● Hot Lunch  
● Fishing ● Swimming  
● Tennis Instructions  
● Ice Skating ● Twirling

**835-6656**  
HICKORY HILL  
COUNTRY CLUB Totowa, N.J.

## PSE&G purchasing gas to cut back oil-burning

Public Service Electric and Gas Company announced today that over the next two years it expects to purchase up to 43 billion cubic feet of additional natural gas which would be used as fuel for the generation of electricity and save seven million barrels of oil.

Based on current prices, the switch to natural gas could reduce the company's cost of fuel for the next two years by \$30 million, a saving which would be passed on to customers. Without the additional gas, the company estimates that it

will burn about 14 million barrels of oil in 1979 alone.

The company notes that use of the gas would be in line with statements of Energy Secretary James Schlesinger and David Bardin, administrator of the Economic Regulatory Administration, that it is in the national interest for utilities to use any surplus natural gas available to reduce the importation of foreign oil. Most of the oil that PSE&G uses must be imported from abroad and is of low-sulphur content required by environmental regulations.

PSE&G said the natural gas would be used instead of heavy oil for large steam units and also to replace light oil used for combustion turbines.

The company said it is seeking necessary regulatory approvals from the Federal Energy Regulatory Commission and the Economic Regulatory Administration.



Vincent  
Cozzarelli  
Reg. Ph.



Infection due to bacteria, viruses, or allergic sensitivity to dust, pollen, or molds can cause sneezing, burning, inflammation, or itching of the eyes or eyelids. Sometimes an eye wash is all that is needed to clear up the irritation, especially in cases of discomfort from swimming pool water or the like. Other eye complaints, especially those that are persistent, should be checked by a physician. Most eye ailments can be cured fairly easily with prescribed eye drops or ointments. There is no need to live for an extended period with eye irritation.

When antibiotics or ointments are prescribed by your doctor, you know you can get them from us at ROSSMORE PHARMACY, 338 Washington Ave., 759-1956, 759-1968. We always keep a complete stock of drugs so we can have them available when you need them. There is still time to purchase greeting cards, gifts or Russell Stover candy for Mother's Day. Open: Daily 9am-10pm, Sundays 9am-5pm. Happy Mother's Day!

**HELPFUL HINT:**  
Hard fibrous food helps keep dentures clean.

*Especially for you!*

FREE this month!

Personalized  
Engraving  
or  
Tinting...

on complete  
pair of  
eyeglasses  
with plastic  
lenses.

**SUSAN VALENZA OPTICIAN**

**165 Franklin Ave., Nutley**  
opposite Gantner's — 667-0444

**FASHION • QUALITY • SERVICE • VALUE**

For Spring . . .

**It's Stripes**

This single breasted, 3 piece striped suit, boasts fine European styling and tailoring. Let your clothes reflect your style this Spring. Available in grey, black, tan, white and other spring colors.

Elsewhere pay up to \$180.  
**\$119**

Choose from our huge selection of quality designer fashions & world famous brand suits, selling elsewhere for up to \$125, at Suit Yourself as low as **\$76**

Our entire selection of shirts, sweaters & accessories are usually 50% off the prices elsewhere.

**ALTERATIONS**  
on all our fine fashions  
done on premises for only  
\$1 per adjustment.

Men's Retail Factory Outlet

**Suit Yourself**

346 Bloomfield Avenue, Bloomfield  
Off Exit 148, Garden State Pkwy.  
**748-8605**

Open Daily 10-9, Saturdays until 6 • Major Credit Cards Honored

# NO BANK PAYS MORE THAN FIRST DeWITT

## NEW HIGH RATES ON 6-MONTH CERTIFICATES!

\$10,000 MINIMUM

# 9.98%\* 9.61%

effective  
annual  
yield on

A  
YR.

AVAILABLE MAY 10 THROUGH MAY 16

The above rate is an annual equivalent. In other words the rate your funds would earn if interest and principal were to remain on deposit for a full year.

Interest is earned from day of deposit and credited at maturity. However, the certificate matures in 26 weeks and the rate at renewal time could be higher or lower than it is now. Also, Federal Regulations prohibit the compounding of interest during the 6-month term of the account. If funds are withdrawn before maturity, no dividends will be paid. Your funds are insured up to \$40,000 by the Federal Savings & Loan Insurance Corp.

To buy a high yielding First DeWitt Certificate Act NOW. This offer may be withdrawn anytime.



**First DeWitt  
Savings** AND LOAN  
ASSOCIATION



BELLEVILLE • BLOOMFIELD • HOPATCONG

MAIN OFFICE: 463 Washington Ave., Belleville  
BLOOMFIELD CENTER OFFICE: 667 Bloomfield Ave., Bloomfield  
WATSESSING OFFICE: 20 Watseessing Ave., Bloomfield  
BROOKDALE OFFICE: Broad St. & Watchung Ave., Bloomfield  
FOREST HILL OFFICE: 60 Belleville Ave., Bloomfield  
HOPATCONG OFFICE: Sharp Ave. & Hopatcong Rd.

IN BELLEVILLE AND IN BLOOMFIELD, CALL 751-2800 (ALL OFFICES) • IN HOPATCONG CALL 398-0900

**You couldn't do business with friendlier people**

Thurs. Fri. Sat. & Sun. Specials

1 lb. HOT REAL JEWISH  
CORNED BEEF **\$3.79**

1 lb. HORMEL DI LUSSO  
GENOA SALAMI **\$3.57**

1 lb. ITALIAN STYLE  
CAPICALO **\$2.99**

1 lb. THUMANN'S OLD FASHIONED  
BOLOGNA **\$1.99**

SPECIALS SOLD  
IN ONE POUND PACKAGES ONLY  
PICK UP PARTY BROCHURE TODAY  
Open 7 days a week till 10:00 P.M.

**Towne** 751-3935  
**DELICATESSEN**  
650 JORALEMON ST.  
Cor. Franklin Ave., Belleville





**Don't get new eyeframes  
without first getting a  
Cosmesis Analysis!**

Every day you see women wearing frames that all but destroy their good looks. With a Cosmesis Analysis you'll never worry again about your frames being right for you! For your Cosmesis Analysis, phone or visit.

**Valenza Opticians**

OF NUTLEY

**357 FRANKLIN AVE.**

(ACROSS FROM POST OFFICE)

**20% OFF FOR SENIOR CITIZENS**

NUTLEY

Mon. & Fri. 10-9  
Tues. Wed., Thurs. 10-8  
Saturday, 10-5

661-3451

## ASK RITA

Dear Rita,

I'm pregnant. The baby is due in November. I planned to graduate from high school in 1980. Will the school allow me to return in the fall? I really want to stay in school!

Signed,  
Lady in Waiting

Dear Lady,

Every child in New Jersey is entitled to an education until the age of 18. If you are physically unable to attend classes due to complications or discomfort as you near your ninth month, I believe that home instruction should be provided by the school. Then you could return to school as soon as you were able, after the baby is born.

If you run into any problems, you should check with your lawyer to find out about your legal rights to an education.

Rita

**Mandee**  
**NYLON TRICOT**  
**HALFSLIPS**  
ASSORTED LACES  
AND COLORS  
**2.99** VALUES  
TO \$8  
Offer ends Wed. May 16  
AT THIS STORE ONLY!  
Mandee Shops 364 Centre Street



**THE KING OF PRICES**

Hot & Cold Catering

**BILL-TONE'S**

95 Harrison Street, Nutley

667-4877

**1 Week Only**

May 11th to May 17th

We Slice To Your Order  
Store Hours: 7:00 A.M. to 9:00 P.M.

**SLICING**  
**PROVOLONE**  
**\$2.39** lb.

**MRS. SMITH'S**  
**PIES**  
(serves 8 to 10)  
**\$2.25** & up.

**HOMEMADE**  
**ITALIAN SAUSAGE**  
(Hot or Sweet)  
**\$1.99** lb.

**CHOPPED**  
**HAM**  
**\$2.09** lb.

**PROSCIUTTINI**  
**\$2.89** lb.

**SIRLOIN**  
**BEEF PATTIES**  
1/4 lb. each **\$2.09** lb.

**BANQUET HALL FOR RENT**  
**LOCAL 410 BUILDING**  
**49 DODD STREET, BLOOMFIELD**

**Engagement Parties**

**Wedding Receptions**

**Anniversary Parties**

**\*Showers, Dances, For All Occasions\***  
**Convenient Parking**

**Catering Optional**

**50-250 PEOPLE**

Contact: Mr. Max Rabinowitz

49 Dodd St., Bloomfield

743-4550

OR 388-9480 (HOME)

## Clara Maass doctor to head med society

Dr. Robert J. Lorello, an orthopaedic surgeon who practices in Belleville, will be installed as president of the Essex County Medical Society today at its annual meeting at the Town and Campus in West Orange.

Lorello, a resident of Short Hills, succeeds Dr. Frank Y. Watson of Montclair as head of the state's second largest medical organization.

A senior attending in orthopaedic surgery at Clara Maass Memorial Hospital, Lorello has served as president of the medical staff there. He is also on staff at Columbus and St. James Hospitals and the Hospital for Crippled Children, all of Newark, St. Barnabas Medical Center in Livingston and St. Mary's Hospital in Orange. Lorello is a clinical assistant professor of orthopaedic surgery at the College of Medicine and Dentistry of New Jersey-Newark.

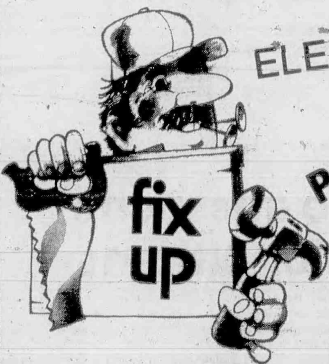
In addition to his authorship of papers dealing with fractures, Lorello recently lectured and demonstrated special orthopaedic

techniques through a scientific exhibit for the New Jersey Orthopaedic Society, of which he is a member. Lorello is a diplomate of the American Board of Orthopaedic Surgery, a fellow of the American College of Surgeons, a charter member of the Eastern Orthopaedic Society and the Practitioner's Club of New Jersey.

Following his graduation from Seton Hall University, Lorello took his medical degree at the College of Medicine of New York-SUNY in 1953. After taking an internship at Marlboro Medical Center, Newark, he served as a medical officer with the rank of lieutenant commander in the Navy from 1954-56, subsequently taking a residency in general and orthopaedic surgery from 1956 through 1960 at St. Vincent's Hospital in New York and New York University-Bellevue Medical Center.

Lorello and his wife Anita are the parents of four children, Silvia, Marisa, Robert and John.

# CLEAN-UP FIX-UP PAINT-UP



ELECTRICAL SUPPLIES

POWER TOOLS

MASON BLOCKS

HARDWARE

HOUSEWARES

GARDEN TOOLS

SAKRETE

LUMBER & BUILDING SUPPLIES

LUMBER-  
Dimension Lumber  
Plywood  
Paneling  
Millwork  
Windows



NAILS PANELING BOLTS

SAND

NUTS

PAINTS



**True Value**

CEMENT

**Viola Bros.**  
Home Center

PLUMBING SUPPLIES

180 WASHINGTON AVE.  
NUTLEY, N.J. 667-7000

HOURS: MON. 7:30-8:00  
TUES THRU FRI 7:30-4:30  
SAT 7:30-1:00



# opinion

## Mayor Gibson is right

Newark Mayor Kenneth A. Gibson has requested a special June election to fill a vacancy in the 28th Assembly District.

Most of the 28th District lies in Newark and Gibson wanted ongoing representation in the New Jersey Legislature of all the people from the city he represents.

The objection to Gibson's request was based upon the cost of a special election. The dollar sign should never be the equalizer for the price of maintaining democracy.

If one were to stop and wonder over the cost of school board elections and the tiny outpouring of voters who participate — if one were to stop and ponder the cost of our primary elections, taking into account the small number of voters

that cast ballots — the dollar cost would lead all prudent people to eliminate the primary ballot and substitute party conventions — one would be led to eliminate school board elections and substitute them with appointed school boards.

We think Gibson acted correctly in urging a special June election. Unfortunately, County Executive Peter Shapiro and a majority of the county freeholders opposed what we consider to be a reasonable request by Gibson.

*Frank Stalks*

## Cryan and Stalks

Essex County Sheriff John J. Cryan is one of five candidates seeking the democrat nomination for Sheriff in the June 5 primary election.

Incumbent Register Larrie W. Stalks of South Orange finds herself in a five-way race for the Democrat Party's nomination.

Sheriff Cryan is concluding nine years, or three terms in the job.

Apart from questions raised in his post election bid for the Democrat Essex county executive nomination, Cryan has an unblemished record in office. He is a good man. He is a dedicated public servant. He is a good sheriff. He has interfaced well with the various law enforcement organizations which are obliged to come in contact with the sheriff's office. His nine-year record reflects a clean administration. Cryan is entitled to renomination on June 5.

Essex County Register Larrie Stalks also has served well in the

job. She is concluding her first five-year term and wants to serve another.

The register's office is a county activity which the general public almost never sees in action or even realizes exists, but exist it does and valuable work it performs.

During her five years in office no one has criticized the performance of Mrs. Stalks.

In fact, up to this writing all we have heard is praise for Mrs. Stalks. We like her. We like her performance in office. She has prudently managed the public service office. She has treated taxpayer money with tender loving care.

On her record Mrs. Stalks is entitled to renomination.

*Frank Stalks*

### GUEST EDITORIAL

## Be kind to animals

We need another and a wiser and perhaps a more mystical concept of animals. Remote from universal nature, and living by complicated artifice, man in civilization surveys the creature through the glass of his knowledge and sees thereby a leather magnified and the whole image in distortion. We patronize them for their incompleteness, for their tragic fate of having taken form so far below ourselves.

And therein we err, and great-

ly err. For the animal shall not be measured by man. In a world older and more complete than ours they move finished and complete, gifted with extensions of the senses we have lost or never attained, living by voices we shall never hear.

They are not brethren, they are not underlings; they are other nations, caught with ourselves in the net of life and time, fellow prisoners of the splendour and travail of the earth. — By Henry Beston

## Bulletin Board for May

(Items for the Belleville Bulletin Board may be sent to 246 Washington Ave., or telephoned to the Times/News at 759-3200. There is no charge for this public service. Belleville organizations are urged to list future events well in advance so the weekly listing of events can serve as a "clearing house" for other groups attempting to avoid conflicting dates.)

### THURSDAY, MAY 10

10 a.m. Preschool for three year olds will be given by Melody Connell. Preregistration required. — Belleville Public Library, 221 Washington Ave.

10 a.m. "The Treasures of Tutankhamun", a library lecture and media presentation by Adrea Cohen. — Belleville Public Library, 221 Washington Ave.

12 noon Lions Club luncheon meeting. — Fountain Restaurant, 46 Watessing Ave.

1 p.m. Senior Citizens Club sponsored by Essex County Park Commission. — Belleville Ave. in the park.

3:45 Boys' track. Belleville vs. Kennedy (Paterson). — at home.

3:45 p.m. Girls' track. Belleville at Kennedy (Paterson).

6:30 p.m. Kiwanis Club supper meeting. — Fountain Restaurant, 46 Watessing Ave.

6:30 p.m. Belleville Chapter of Optimist International. — Branch Brook Manor.

7 p.m. Spanish conversation-intermediate level will be taught by Faith De Roos. — Belleville Public Library, 221 Washington Ave.

7:30 p.m. Belleville Planning Board regular public monthly session. — Town Hall, 152 Washington Ave.

7:30 p.m. Planning Board meeting. — Town Hall.

8 p.m. Varsity Club meeting. — Little League Building.

8 p.m. Belleville Fire Dept. Ladies' Auxiliary meeting. — Recreation House, 407 Joramston St.

### FRIDAY, MAY 11

9:30 a.m.-2 p.m. Attic treasure sale. — Wesley Methodist Church, Washington Ave. and Academy St.

1 p.m. Belleville Senior Citizens' Social Club meeting. — Recreation House, Franklin Avenue at Mill Street.

3:30 p.m. Mother's Day crafts, a library crafts program for young people. — Silver Lake Branch, Belleville Public Library, 30 Magnolia St.

3:45 p.m. Varsity baseball. Belleville at Montclair.

3:45 p.m. Freshman baseball. Belleville vs. Montclair. — at home.

3:45 p.m. Softball. Belleville at Montclair.

3:45 p.m. Boys' tennis. Belleville at East Orange.

Dinner for Mr. Herman D. Knuppel Tickets — 759-4338 — Chandelier, 377 Franklin Ave., Belleville.

7 p.m. Belleville Library Board of Trustees. — Library, 221 Washington Ave.

8 p.m. Annual card party sponsored by Salon 8 (Legion Auxiliary). — American Legion Post 70, 45 Franklin Ave., Nutley.

### SATURDAY, MAY 12

10 a.m. Baby sitting course will be given by Adrea Cohen. Certificate will be issued on completion of class. — Belleville Public Library, 221 Washington Ave.

10 a.m. "Make A Gift For Mom", a Mother's Day handicraft program. — Belleville Public Library, 221 Washington Ave.

1:30-6 p.m. Mothers' Day plant and flower sale sponsored by Clara Maass Hospital School of Nursing junior class. — Hospital Coffee Shop.

Belleville crew in Mid-Hudson regatta. — Poughkeepsie.

6:30 p.m. Mother's Day party sponsored by women of Belleville Post 105, American Legion. — Post Home, 621 Washington Ave.

### MONDAY, MAY 14

12 p.m. Business English, a library course taught by Adrea Cohen. — Belleville Public Library, 221 Washington Ave.

Artwork of Lorena Clark will be on display through June 30. — Belleville Public Library, 221 Washington Ave.

1 p.m. Senior Citizens Club sponsored by Essex County Parks Commission. — Belleville Ave. in the park.

May 14 (Mon.) 3:45 p.m. Softball. Belleville vs. at Cecilia. — Belleville High School.

3:45 p.m. Boys' track. Belleville vs. Queen of Peace (Livingston). — at home.

6:30 p.m. Full length film. — Belleville Public Library, 221 Washington Ave.

8 p.m. Board of Education monthly business meeting (open with full public participation). — 383 Washington Ave.

8 p.m. Knights of Columbus. — 98 Bridge St.

8 p.m. Elks Lodge meeting. — 283 Washington Ave.

### TUESDAY, MAY 15

9:30 a.m. Belleville Old Guard meeting — Knights of Columbus Hall, Bridge St.

10 a.m. Preschool for three year olds will be given by Melody Connell. Preregistration required. — Belleville Public Library, 221 Washington Ave.

10 a.m. Developing reading

readiness with your children, a library lecture by Adrea Cohen. — Belleville Public Library, 221 Washington Ave.

12 noon Inauguration ceremonies of newly-elected Board of Commissioners. Session will include administration of oaths of office, selection by commissioners of Belleville's mayor for coming four years, and appointment of professional staff. — Commission Chambers, 2nd floor, Town Hall, 152 Washington Ave.

1 p.m. Belleville Senior Citizens Club. — 125 Franklin Ave.

3:45 p.m. Varsity baseball. Belleville vs. East Orange. — Belleville High School.

3:45 p.m. Freshman baseball. Belleville at East Orange.

3:45 p.m. Softball. Belleville at East Orange.

3:45 p.m. Girls' track. Belleville vs. Mt. St. Dominic (Verona). — at home.

3:45 p.m. Boys' tennis. Belleville at Verona.

6:30 p.m. Belleville Nutley Chapter of Deborah spring fashion show. Tickets at \$8 may be obtained by calling 759-2201. — Amvets, Newark Ave.

7:30 p.m. Last PTA meeting of the year with installation of officers and heritage night. — School 9.

8 p.m. Board of Commissioners regular business meeting with full public participation. Town Hall.

8 p.m. Catholic Daughters of America, Court Sancta Maria 61. — Knights of Columbus Hall, 98 Bridge St.

WEDNESDAY, MAY 16

9:30 a.m. Belleville Retired Men's Club. — Fewsmith Church, 444 Union Ave.

12:15 p.m. Belleville Rotary Club. — Chandelier Restaurant, 340 Franklin Ave.

1 p.m. Essex County Park Commission Senior Citizens' Club. — Belleville Ave. in the park.

1:15 p.m. "Bobby Goes to the Hospital", a puppet show presented by Belleville Junior Woman's Club. — Clara Maass Memorial Hospital pediatric playroom, 1 Franklin Ave.

3:45 p.m. Softball. Belleville vs. Passaic. — Belleville High School.

6:30 p.m. Branch Brook-Belleville Kiwanis Club. — Biase's Restaurant, 451 Bloomfield Ave., Newark.

7:30 p.m. Cozzarelli Association meeting — Moose Lodge, 22 Eugene Pl.

8 p.m. Italian-American Civic Association and Auxiliary. — Montgomery Church, Mill St.

8 p.m. Essex County Multiple Sclerosis Association — Cerebral Palsy Center (behind Clara Maass Memorial Hospital).

## Guglicelli responds to questions from Belleville's senior citizens

To the Editor:

These were the question questions put to me by senior citizens and these were my answers in the campaign which ended this week:

1. Your platform says new homes and other improvements will be tax exempt for two years, is that legal. Answer: Yes.

2. Can you tell me which commissioners noted for and against the new assessment. Answer: It takes four votes to pass it the only one that voted against it was Commissioner Senator.

3. Who had the power to reject it. Answer: The town assessor and the mayor.

4. Was it done before. Answer: By a mayor in a South Jersey town.

5. What is your position on the fire houses. Will you close them. Answer: No.

6. With your fire more firemen because of the new fire house. Answer: No.

7. What is your stand on high rise buildings if you are referring to the ones funded by the federal government located in Newark. Answer: My answer is no. They pay no taxes and within 5 years they will become slum areas. I consider office buildings. They bring in tax revenue.

8. How would you reduce the assessment for home owners. Answer: After looking over the property, I would recommend it be reduced by the town assessor.

9. What if he refuses. Answer: I will let the court decide since it was illegal and a conflict of interest. You cannot serve two masters.

10. Can you legally cut in half the taxes paid by a senior citizen retired and living on a fixed income and unemployed. Answer: Yes. It must be approved by the commissioners that represent you.

11. Can you, if elected, do anything about the illegal school tax. Answer: No. That is for the board of education to decide. All school budgets are the responsibility of the state with the approval of the state income tax. That law is on the books

and is being violated.

12. If you lose the race will you run again. Answer: No. I entered this race to protect the people from future hardships and rip-offs they must now decide higher taxes or vote for the man with the platform to reduce them. All my answers met with their approval.

Sincerely yours,  
Albert Guglicelli  
75 Lake St.

## the Belleville times/news



Publisher  
FRANK A. ORECHIO

Editor  
JOHN JURICH

Social Editor  
HELEN MAGUIRE

Published every Thursday  
at 246 Washington Avenue,  
Belleville, New Jersey, 07109  
Telephone: (201) 759-3200

## Prayer for today

God, I do not know what I want,  
But You know, I do not know where I am,  
But I know where You are:

Show me the way,  
I am here to be helped,  
To get back my hope,  
To find that illusive happiness  
That does not depend on getting  
What it wants:  
Come back to me, O God,  
Lest I forget how good life can be,  
What it is to wake up in the morning  
Eagerly.

Keep me young,  
And help me at the halfway mark  
Not to throw away the good I've done.  
Keep me from getting weak,  
From going to pieces





## Dinner benefit is ready

A fund-raising event hosted by the Parent-Teacher-Therapist Association of the Cerebral Palsy School and Treatment Center, Belleville, will be held this Saturday from 8 p.m. to 1 a.m. at the West-mount Country Club, West Paterson.

The evening of dining and dancing will open with a hot and cold buffet. A full-course dinner with all the extras, five hours of open bar and continuous music, plus entertainment will be offered. Tickets at \$25 a person are tax deductible.

Children and young adults from Essex and West Hudson Counties afflicted with cerebral palsy, developmental disabilities, multiple handicaps and other crippling disorders are provided with education, therapy and medical treatment at the Belleville treatment center. Founded 32 years ago by a small group of parents, the center no longer is of adequate size to meet the needs of today's children.

An expansion of the facility is presently underway, and funds raised from the dinner, dance and and journal will help defray the cost of the specialized equipment essential to the special needs of the children.

### PARK MANOR

NURSING HOME  
Dedicated to Better Patient Care  
Specializing in Female Patients

PROFESSIONAL NURSING STAFF  
REHABILITATION PROGRAM  
PHYSICAL THERAPY  
OXYGEN FRACTURE EQUIPMENT  
SPECIAL DIETS

- AGED
- CONVALESCENT
- CHRONICALLY ILL
- POST-OPERATIVE

23 Park Place, Bloomfield  
743-7772

Member of NJ American Nursing Home Assoc.  
Professional Care in a Homelike Environment



Dear Friends,

Our deepest condolence to the family of Farro of Nutley & Belleville, our dear friend for the loss of their father. From this corner we send a prayer to God to Amalie.

We have been too busy this week, to answer your questions. Maybe next week.

We are pleased to announce that Dolores has joined our staff (Thurs. Fri., Sat.). Mrs. Heilmann, we heard about your great fall — hope you are feeling better.

We are working on our parking lot. In two or three weeks it will look beautiful — Thanks to you! Thank you for keeping us busy. Umberto and Staff

Umberto of Naples

547 Harcourt and Cottages St.  
549 Union Harcourt Extension  
Washington Ave. Belleville 759-4900  
FREE PARKING at 557 Washington Ave.



**Seton Hall Exhibit** — During the recent art exhibit of work by graduating art majors at Seton Hall University, Victoria Gesumaria of Newark shows her paintings, "Girl," to fellow artists Marge Marren of Belleville and Gregory Cangialosi of Hillside whose paintings were also included in the university exhibit.

## Teeth on TV here tonight

"Proper Dental Care for Children," a cable television program sponsored by the Belleville Public Library and the Essex County Library Directors Association, will be shown this evening on Suburban Cablevision TV-3 at 6 o'clock.

Repeat telecasts are scheduled for Wednesday, May 23, and Tuesday, May 29.

Dr. Robert Ramer, a Nutley dentist, who has presented many programs at the Belleville Library, will discuss the vital health care of children.

Mrs. Adra Cohen, assistant library director, will appear with Dr. Ramer and discuss his presentations at the library.

A graduate of Rutgers University

and N.J. College of Medicine and Dentistry, Dr. Ramer served in the U.S. Army Dental Corps before establishing his practice in Nutley, where he is school dentist for the Nutley Board of Education.

Dr. Ramer is a member of the N.J. Dental Society, the American Society Dental Children and the Essex County Dental Society.

### REMINDER FROM LOCAL DOCTOR

## Foot health is important

By Dr. Schaill C. Frank

Parents are aware of the importance of their children's eyes, teeth, etc., but frequently are unaware of the importance of proper foot health. Recent surveys have shown one out of five school children have foot problems needing attention.

Here are some common misunderstandings concerning babies' feet:

1. "All babies have flat feet."

Not true. This myth tends to encourage neglect of those babies who truly do have this problem. Only when the infant takes his first step does an arch develop. This is a hereditary trait seen in at least one of the parents.

2. "Your child will outgrow his foot or leg problems."

The fact that older children have a higher percentage of problems than infants indicates that all problems do not spontaneously improve.

3. "If a child does not outgrow a foot problem, the child should be fitted with a good pair of corrective shoes."

This is a final guarantee that the problem will be left uncorrected. While well fitting shoes are a good investment, they simply cannot correct many different foot disorders.

The critical period of foot and leg development is in the first year of life. This is when the foot can be molded into either a deformed or

corrected position. The use of angled shoes, casts or bars are most successful during this period.

The parents should inspect the child's feet and legs for the presence of some problems as:

1. Flat feet evidenced by a bulge on the inside ankle or with older children on the medial counter of the shoe.
2. Knock knee, bow-legged condition, in toe and out toe, associated with abnormal foot, leg and or thigh development.
3. There should be no unusual tightness or excess wrinkles of the skin. You may see this with a foot in a "down and in" or "up and out" position.
4. Both foot and knee should face straight ahead. If the infant is in full control of his gait and trips over his feet, consult your podiatrist.
5. Remember, the normal toe to heel gait occurs after age two or three.
6. Growing children rarely complain of pain or discomfort, another reason why problems are not diagnosed at an early age.

If isolated as a foot disorder, an orthosis, a device worn in the shoe will straighten or improve the function of a growing foot.

### Jodi Spurduto crowned 'Ms. American Dream'

Jodi Spurduto, 131 Cedar Hill Ave., has been crowned "Ms. American Dream" in a contest, sponsored by the American Cancer Society. She won in the 13 to 17 year group.

A sophomore at Belleville High School, Jodi also won a dance competition following the contest. She is auditioning for an appearance at the Garden State Arts Center.

**Joseph's Photographers**  
special photographs  
for your special day  
614 Franklin Ave. Nutley  
667-2440

## DR. BRUCE E. GORDON and DR. ARTHUR I. LESTER

announce the opening of  
another office  
for the practice of  
**OTOLARYNGOLOGY**  
Specializing in Ear, Nose, Throat and  
Facial Plastic Surgery

Their Nutley office will still be maintained  
5 Franklin Avenue 759-4005  
Belleville

## Roche to hospitals: here's \$10,000 gift

Hospital grant totals given Roche donating Contributions totalling \$10,000 are being made this month by Hoffmann-La Roche Inc. to eight New Jersey hospitals including Belleville's Clara Maass Memorial.

Each of the health care institutions will receive a check in the amount of \$1,250 as the first-quarter installment on a \$5,000 grant for 1979 from the Nutley-based company.

Grant recipients, which are located in communities with substantial Roche employee populations, are Beth-Israel Hospital, Passaic; Clara Maass Memorial Hospital, Belleville; Montclair Community Hospital, Montclair; The Mountaineer Hospital, Montclair; Passaic General Hospital, Passaic; St. Mary's Hospital, Passaic; St. Vincent's Hospital, Montclair, and Warren Hospital, Phillipsburg.

Roche hospital grants are provided as part of the company's

on-going program in support of local community service institutions. All eight hospitals have received annual grants from the research-oriented pharmaceutical firm since 1968. The hospital grant program began in 1945.

Hoffmann-La Roche Inc., one of the largest companies devoted to improving the quality of health care, responds to the problems and needs of people, institutions and communities through a number of programs. In addition to providing grants to hospitals, the company acknowledges its role as a responsible corporate citizen by giving support to institutions of higher education. Charitable contributions are made to a variety of domestic organizations in medical, community, scientific and health programs. Community activities, cultural centers and performing arts groups may also benefit from Roche financial support.

### Dr. Schaill C. Frank Surgeon Podiatrist

SPECIALIZING IN PODIATRIC MEDICINE & FOOT SURGERY

is located at  
567 Franklin Ave., Belleville-Nutley Line  
759-6298

HOURS DAILY BY APPOINTMENT



**Deanna's**  
V.I.P. Hair Boutique  
Dee La Conti, Prop.  
529 Joralemon St.  
Belleville, N.J. 759-6633

### NOW AVAILABLE

- Expert Unisex Work
- All types Waxing
- Painless Ear Piercing
- Henna's
- "Pretty Feet" Pedicures
- Special Attention to the Younger Child
- Senior Citizens
- Specials - Tues. & Wed.

FOR A GREAT LOOK,  
A GREAT FEELING, A BALANCED  
MOISTURE LEVEL IS CRITICAL:

MOISTURE GUARANTY  
**MQ**

## CORNER DELI

Jug Milk 1<sup>97</sup>  
Domestic Lean  
Boiled Ham \$2<sup>99</sup> lb.  
Turkey \$2<sup>99</sup> lb.

Oval Spiced  
Ham \$1<sup>99</sup> lb.  
Bacon \$1<sup>99</sup> lb.  
Liverwurst \$1<sup>49</sup> lb.

- fresh mozzarella in water
- fresh Italian sausage
- fresh buns every Sunday

• price includes per pound or any part of a pound

560 Union Ave.- Cor. Greylock Pkwy. Belleville, N.J.

## We're your type writer specialists.

IBM factory reconditioned  
• Adler • Olivetti • SCM •  
Citizen • Underwood •  
Olympia

Canon • Sharp • Victor •  
Citizen • TI • H-P • Adler  
Calculators

GRADUATION  
SPECIAL  
NEW Underwood  
Electric Portable  
\$139.95  
Model 555

SPECIAL  
Clean & Lubricate  
any Typewriter  
\$16.95  
with this ad only  
thru 5/31/79  
adjustments extra  
parts extra  
carry-in only

Belleville  
Typewriter and  
Adding Machine  
Company  
79 Washington Avenue  
Belleville 751-0068

Quality service for 22  
years. Sales, service,  
rentals, supplies.

We rebuild antique  
typewriters. Come see our  
collection of them.



Give Mom more time  
to brag about you.  
Send her the  
FTD BIG HUG®  
BOUQUET Early!  
Call or visit us  
today. We can  
send Mother's  
Day flowers  
almost any-  
where — the  
FTD way.

SEND ONE...TAKE ONE HOME  
OUR FTD

**BIG HUG®  
BOUQUET**

MOTHER'S DAY IS SUNDAY, MAY 13.  
SEND HER FLOWERS—EARLY!

Flowerama Inc.  
180 Washington Ave.  
Belleville, N.J.  
759-0012



## Senior notes

By GEORGE CHENOWETH

There are job opportunities for seniors through the Senior Situations Newsletter distributed by the Essex County Office on Aging. At present, there is a need for secretaries, drivers, typists, parking lot supervisors, companions to the elderly, assemblers, domestics and guards. Both part-time and full-time jobs are available. Apply at 160 Halstead St., East Orange, or call 673-4252.

For information on coverage of Social Security and Medicare there is a 436-page book with details and examples of how the two programs work. Write to Commerce Clearing House, 4025 West Peterson Ave., Chicago, Ill., 60646. The book is \$7.

There is a government publication entitled, "Your Medicare Handbook," in which the basics for consumers are outlined, and it is available free from any Social Security office and from Health Care Financing Administration headquarters, Baltimore, Md., 21235. Ask for HEW Publication No. SSA 78-10050.

We have been advised by Director Bernard Gallagher of the Essex County Office on Aging of the extreme importance of sending messages to our United States senators, Williams and Bradley, supporting an amendment that would add \$100 million for older Americans' nutrition and social services. This amendment would supplement the first concurrent budget resolution for the 1980 fiscal budget. It would also be good policy to add that we oppose the proposed cut of \$500 million from the Social Security system.

Our federal administration's proposals to cut back on Social Security benefits has met with strong opposition from Sen. Gaylord Nelson of Wisconsin. Senator Nelson is chairman of the State Finance Subcommittee on Social Security, and he accuses President Carter of trying to eliminate or reduce Social Security benefits in the Old Age and Survivors Insurance Program. Nelson says, "The Social Security system is, in my judgment, the most successful social program in our history. It has worked extremely well for 40 years. Without it, millions of people would be in desperate circumstances." To which we add, "Amen."



**Tipting Through Tulips** — Belleville senior Isabella Olivieri proudly shows her green thumb and points out the flourishing tulips that she planted and cultivated near the side of the Belleville Recreation Center for other seniors to enjoy.

"We Really Clean Cars Differently"

**TIP TOP CAR WASH**

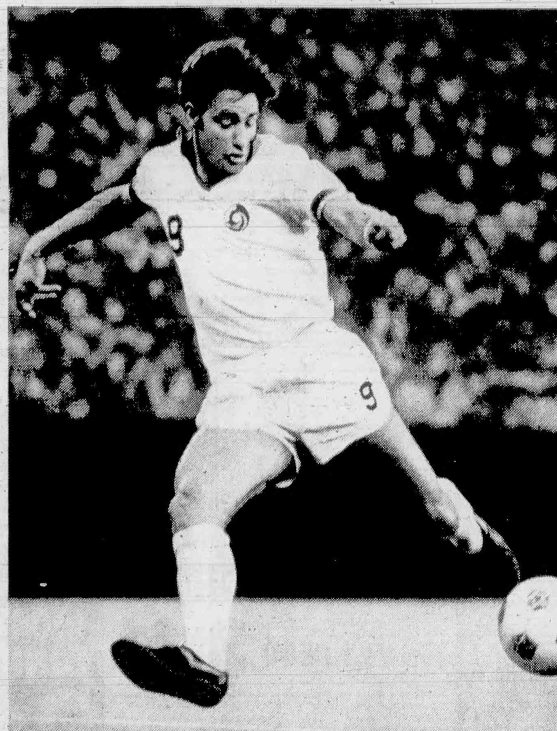
Open 7 Days a Week  
485 Ridge Rd. 7:45-5:30 P.M.  
N. Arlington, N.J. Sundays & Holidays  
991-3629 7:30-3 P.M.

**OPEN SUNDAY 'TILL 3:00**

**WITH THIS VALUABLE COUPON \$1 OFF**

Any full service car wash  
Mon. or Tues. Only May 14 & May 15

## Join Giorgio's team: The Fidelity Soccer Savers.



### Earn high interest and get gifts to boot.

Giorgio Chinaglia, the North American Soccer League's scoring champion, has joined another winning team — the Fidelity Soccer Savers! You can join, too!

Just open a Statement Savings Account earning 5% a year with a deposit of \$82 or more — that's \$1 for every goal Giorgio has scored for the Cosmos — and look what you'll get:

- "I'm on Giorgio's team" T-Shirt
- Autographed Picture
- Automatic Membership in the Giorgio Chinaglia Fan Club
- Soccer Savers Wrist Band
- And more!

Join Giorgio's team today. Mail in the coupon or come into the Fidelity office nearest you. You'll come out a winner.



Mail to:  
Fidelity Soccer Savers Club  
765 Broad Street  
Newark, N.J. 07101



Enclosed is my deposit of \$ to open a new 5% Statement Savings Account. (Minimum deposit \$82. For information on high interest long-term savings plans, visit the Fidelity office nearest you.) Please rush me my Soccer Savers Gift Package.

PRINT NAME _____	SOC. SEC. NUMBER _____
SIGNATURE _____	
ADDRESS _____	
CITY _____	STATE _____ ZIP _____
T-Shirt Size: Adult <input type="checkbox"/> Small <input type="checkbox"/> Medium <input type="checkbox"/> Large <input type="checkbox"/> X-Large	
Child <input type="checkbox"/> Medium <input type="checkbox"/> Large <input type="checkbox"/> X-Large	
<small>(Minimum deposit must remain on account 12 months. Limit one membership per person, per account. Offer may be terminated without further notice.)</small>	

**Giorgio Chinaglia Day**  
Sunday, May 20th, 12 pm, at Giants Stadium

- Enter the special drawing to win one of five Giorgio Chinaglia Soccer Academy Scholarships awarded by Fidelity.
- Anyone can enter at any Fidelity office.
- Winners will be announced day of the game.
- Free memento of the day to all.

## St. Peter's Church now holding bazaar

St. Peter's Church, 155 William St., is sponsoring its sixth annual bazaar today through Saturday.

Bazaar hours are 7-11 p.m. each day. Proceeds from the event, being held in the school's auditorium, will benefit the school.

A raffle will be held Saturday, and prizes include a vacation trip of the winner's choice valued at \$1,000, a \$750 shopping spree at Wilkesboro Mall and a \$500 food order at Stop and Shop.

Chairman of the bazaar is Walter DuBoise and co-chairmen of the raffles are Thomas Clark and William Zimmerman.

**SPRING SALE**

May 9th to May 18th

**25% OFF**

ON SELECTED REED VINYL WALLCOVERINGS

10 - 25% SALE

ON ALL VINYL WALLCOVERINGS

SALE PRICES ON DUTCH BOY COLORIZER PAINTS

Grumbacher Art Supplies

**BLUE RIBBON WALLPAPER**

**553 Franklin Ave. Nutley 667-1945**

Mon. & Fri. 8 a.m. - 8:30 p.m.  
Tues., Wed., Thurs. 8 a.m. - 6 p.m.  
Sat. 8:30 - 5 p.m.

**FIDELITY**  
UNION TRUST COMPANY  
A Fidelity Union Bancorporation Bank - Member FDIC

Belleville Office: Washington & Belleville Avenues, Belleville, 430-4000  
We sell Cosmos tickets.

## Mary Jo LaMorte will wed Bruce Eisdorfer

Mrs. Marie LaMorte of 250 New St. and Anthony LaMorte of Newark, announce the engagement of their daughter, Mary Jo, to Bruce

## Blood pressure tests May 24 free to public

One in every seven Belleville residents has high blood pressure. Although this silent killer can be easily diagnosed and treated, only about 10 percent of the hypertension victims have their blood pressure under control.

Clara Maass Memorial Hospital in Belleville is offering a free clinic to screen all local residents for high blood pressure on Thursday, May 24, from 1:30 to 8:30 p.m., in the hospital's main lobby.

High blood pressure is one of the major causes of sickness, disability and death in this country. Unlike most other dangerous diseases, it usually has no outward symptoms. A simple, painless test, taking only a few minutes, can detect hypertension.

Although there is no cure for hypertension, it can usually be controlled. In many instances, therapy may be as simple as a pill-a-day. The key to controlling high blood pressure is convincing people to get and stay on proper treatment.

The first step to controlling hypertension is getting regular blood pressure check-ups. A person suffering from high blood pressure may look and feel healthy — until the hypertension erupts suddenly in the form of stroke, heart disease or kidney failure.

One in seven Americans has high blood pressure. Hypertension can affect anyone, including children. Entire families are being invited to participate in the free Clara Maass Hospital program May 24 between 1:30 and 8:30 p.m. in the main lobby.

## Women watch skit on media

Tri-Town Business and Professional Women's Club of Belleville, Bloomfield and Nutley, featured the Tri-Town Players in a skit, "The Media Gets the Message," in a departure from regular business meetings. The players performed for the women's March meeting.

The play was a reverse role of the poor image women receive in business. The owner of an advertising firm dies, leaves the business to his wife who, with two female assistants, terrifies the three male members of the Board. She wants to feature men in swimming trunks to sell a car, and two men to compare their hands after using a certain dish washing liquid. The men feel it is all right for women to "sell" ads this way, but not men. It generates many laughs, but has a serious theme.

The cast included Club President Caroline Theisz of Bloomfield as the chairman of the board; Lillian Westcott as "Mr." Morgan, Ruth Williamson as "Mr." James and Henrietta McCumber as "Mr." Nelson. All are of Belleville. The two female assistants were portrayed by Pat Diana, Belleville, as Ms. Miller and Frances Foley, Bloomfield, as Ms. Jones. As the play ended, with both sides deciding sex should be ruled out when promoting a product, the chairman said, in parting, "That's a fetching suit you're wearing, Mr. Morgan."

Ms. Dorothy Dennison, public relations director of Beth Israel Hospital in Newark, was a guest of Caroline Theisz. Mrs. Dennison spoke on her career in journalism, the difficulties for a woman in this field and her present job at the medical center.

Other guests that evening included Barbara Alden, Nutley, patient representative at Clara Maass Memorial Hospital; Terri Pirone, Bloomfield, employed by Essex County in the Finance Department; Mrs. Emma Struble of Bloomfield, mother of Tri-Town members, Gwendolyn and Hazel Purvis; Nutley, manager of the Bloomfield Branch of Carteret Savings. She was a guest of Madeline Morrello of Bloomfield.

Persons interested in membership are asked to contact Miss Ruth Williamson, 125 Union Ave., Belleville.

**Bible Talks**  
undenominational  
Bloomfield College  
Westminster Hall  
Freemont St. Room 103  
Sunday; 4 p.m.  
No Obligation 228-0218

## Cannavina-Jinks troth announced

Mr. and Mrs. Philip Cannavina of Hornblower Avenue, announce the engagement of their daughter, Jeannine, to Michael Jinks, son of Mr. and Mrs. William Jinks of William Street. A spring 1980 wedding is planned.

Miss Cannavina, a graduate of Belleville High School and Montclair State College, is with International Business Machines.

Mr. Jinks, an alumnus of Belleville High School and Lincoln Technical Institute, is the owner of Michael's Towing and Automotive Repairs, Belleville.

## Leanora Arminio to wed Micchelli

Mr. and Mrs. Michael S. Arminio of Montclair announce the engagement of their daughter, Leanora Mercedes, to Gabriel Richard Micchelli, son of Mr. and Mrs. Gabriel W. Micchelli of Belleville.

Miss Arminio, an alumna of Montclair High School and The Mountsinde School of Radiologic Technologists, is a physicians assistant in Montclair.

Mr. Micchelli, a graduate of Belleville High School and the County College of Morris, is a biomedical technician at Datascope, Paramus.



Miss Leanora Mercedes Arminio

## WANTED TO BUY

American 19th & 20th Century Paintings By

Oliver Tarbell Eddy  
Charles Loring Elliott  
George O. "Pop" Hart  
Henry Inman  
Louis Lozwick  
Andrew Melrose  
William R. Miller  
William Sidney Mount  
C. R. W. Norton  
William Tyler Ranney  
William Trest Richards  
T. Worthington Whittridge

Collections or Single Items

1450 Broadway  
New York, N.Y. 10018  
(212) 391-0385  
Tues. - Sat. 9:30-3 P.M.

GOOD SUN., MAY 6 THRU SAT., MAY 12, 1979.

# Two Guys®

## SUPER SUPERMARKET®

TOP SIRLOIN ROAST	1.99	BONELESS CROSSRIB SHOULDER OR BONELESS <b>BOTTOM ROUND ROAST</b>	1.89
TOP ROUND ROAST	1.99		
BONELESS RUMP ROAST	2.19		

FREEZER CUTS PRICED HIGHER

WE SELL ONLY U.S. GOVT. GRADER CHOICE BEEF

GENUINE LONG BONE - SHOULDER

**LAMB CHOPS**

1.99

Lb.

CUT FROM CORN FED PORKERS!

Whole Pork Loin	CUSTOM CUT	1.69
Quarter Loin	2-11 CHOPS ENDS & CENTERS	1.69
Spare Ribs	COUNTRY STYLE FROM RIB END	1.69

FRESH DELICIOUS IN KIDNEY PIE

**BEEF KIDNEYS**

59¢

Lb.

DAIRY DEPT.

ROYAL DAIRY

**ORANGE JUICE**

SAVE 20¢

99¢

1 GAL. CTN.

APPETIZING DEPT. BUYS!

TIVOLI IMPORTED	LONGACRE	PLYMOUTH ROCK
<b>BOILED HAM</b>	<b>CHICKEN BACON ROLL</b>	<b>COOKED SALAMI</b>
79¢	59¢	79¢

FROZEN FOODS!

TWO GUYS

**ORANGE JUICE**

MAKES 1/2 GALLON

SAVE 20¢

89¢

16-OZ. CAN

ICE CREAM DEPT.

TWO GUYS OLD FASHIONED

**ICE CREAM**

SAVE 30¢

1.49

1 GAL. PLASTIC ROUND

BAKERY DEPT. SPECIALS!

TWO GUYS ROUND OR SQUARE

**WHITE BREAD**

NO PRESERVATIVES

3 \$1

22-OZ. LOAVES

CHICKEN - SALISBURY MEAT LOAF - TURKEY

**MORTON DINNERS**

SAVE 14¢

59¢

11-OZ.

MOTT'S

**APPLE SAUCE**

35-OZ. JAR

69¢

RAGU - ALL FLAVORS

**SPAGHETTI SAUCE**

32-OZ. JAR

1.09

RIGATONI, ELBOW MACARONI, SAN GIORGIO CUT ZITI

**3 \$1**

1-LB. BOXES

FOLGER'S

**FLAKED COFFEE**

13-OZ. CAN

1.89

REG. ORDIET

**SHASTA SODA**

12-OZ. CANS

5 89¢

**POPE IS ON SALE NOW!**

Crushed Tomatoes	28-OZ. CAN	59¢
Olive Oil	32-OZ. CAN	1.89
Sweet Peppers	IMPORTED ROASTED 8 1/2-OZ. JAR	59¢
Tomato Paste	8-OZ. CANS	4 \$1

CARNATION

**INSTANT MILK**

20 QT.

4.69

PALMOLIVE

**DISH LIQUID**

12-OZ. BTL.

2 \$1

**FRESH PRODUCE!**

**GREEN CABBAGE**

19¢

Lb.

FRESH & CRISP

**Cucumbers**

WASHINGTON STATE - RED & GOLDEN

5 \$1

**Delicious Apples**

CARTON OF 3 OR 4

49¢

**Tomatoes**

YELLOW

EACH CTN.

39¢

**Florida Sweet Corn**

5 EARS

89¢

**KEARNY**  
175 PASSAIC AVE.

Open Daily 8:00 A.M. to 9:30 P.M. - Sunday 8:00 A.M. to 5:00 P.M.

We reserve the right to limit quantities.  
Not responsible for typographical errors.  
Prices effective thru Sat., May 12, 1979.

©Two Guys Inc., 1979





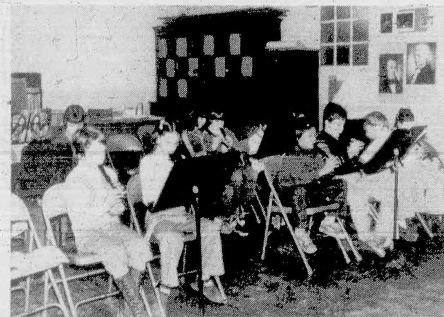
**Temple Bazaar** — Members of Congregation Ahavath Achim Bessie Denner, Anna Beilin, Ruth Shlissel, Mae Barker, Henrietta Orlinsky, Lisa Lemberger, Eleanor Zuckerman, Frieda Berkowitz and Tzipi Burstein stand behind one of the many tables selling an assortment of items during a special Sisterhood bazaar recently.

## School 5 fourth-graders find music abilities with recorder

Fourth-grade pupils at School 5 are learning music by learning to play the recorder. Each week as they study fingerings and practice playing songs, the pupils increase their knowledge of the musical staff, note values and other components of music. Many are developing a special knack for it.

The recorder is an instrument that has been around since medieval times. It is basically a straight flute. The recorder has been enjoying a renewed popularity in recent years, partially because it is relatively easy to play yet capable of producing pure musical tones.

The fourth grade classes meet



**Music Discovery** — Fourth grade pupils at School 5 practice the recorder, a flute-like instrument they have been using to aid their musical studies since October. Many of the children have discovered an aptitude for music since being given an opportunity to play.



**Medieval Study** — The building of castles climaxed a study of the Middle Ages at School 5. Here, sixth graders Leonard Cuzzi and Lisa Paglia are shown putting the finishing touches on their projects. The basic building materials were cardboard boxes and empty rolls from paper toweling that ingenuity transformed into remarkable castles.

## CETA grant will aid program to find work for probationers

Vincent Marzullo of Belleville, Essex County Comprehensive Employment and Training Agency (CETA) director, has signed an agreement for a four-month pilot remedial education work program to help juvenile probationers find employment and resume high school and vocational education.

According to Marzullo, "As grantor, CETA will provide \$89,607 under the Title IV Youth Employment and Training Program (YETP). CETA funds will provide for three vocational education teachers and a job developer and will serve 40 participants."

"We are geared to begin immediately," said Muriel Crowley, chief probation officer of the Essex Probation Department. "Our probation officers have begun to make their selections. They are looking for youngsters ages 16-17½, that meet financial and residency requirements for CETA eligibility, who are out of

school and out of work but have made an effort to get into school and employment. Many are difficult cases with no vocational skills, poor attitudes and lack of motivation."

Walter Joyce, principal probation officer and supervisor of the juvenile program, said, "We have never really had an organized program to help these youths. Our probation officers carry a caseload of 50 to 70 probationers and have investigative duties. Although they try to see each probationer once a week and sometimes get them jobs, without having dealt with attitudes and habits, the jobs usually don't last."

"I am optimistic that an organized program and skills training will make a difference," Joyce continued. "The youths will be paid an hourly minimum wage and we will encourage them to open bank accounts. I think this will provide an incentive to stay with the program."

In three or four months, they will have developed the habit of getting up and reporting to a specific place every morning which is something they may never have done."

Said Miss Crowley, "After the youngsters have been referred by their probation officer, they will be screened for eligibility by CETA staff at the East Orange office. Once accepted, the youngsters will report to our Newark location five days a week for language arts and mathematics; vocational education, recreation, counseling and job placement services."

Marzullo said he expects that within three months some of the youths will be ready for employment. Others would remain with the program the full four months and then secure suitable employment or resume formal education.

"We hope that if it is successful we will be able to continue with additional CETA funding," Marzullo said.



**Remedial Agreement** — County CETA Director Vincent Marzullo of Belleville and Chief County Probation Officer Muriel Crowley complete signing of an agreement under which CETA will fund an education-work program for juvenile probationers.

**TERMITES**  
*Swarming -*  
call  
**BLISS**

BE SURE... BLISS has been serving the Home Owner for 87 years. For a complete FREE INSPECTION of your home by a Termite Control Expert, supervised by the finest technical staff, phone our nearest local office.

**676-8888**

**BLISS TERMITE CONTROL**  
Div. Bliss Exterminator Company - EST. 1892  
One of the Oldest & Largest

# YOUR MONEY.

## EIGHT WAYS WE MAKE IT WORK FOR YOU.

Whether you have it on hand for a day or a decade, your money should always be working earning interest. And First National State has a variety of savings plans designed to meet all of your savings needs.

To begin with we offer this wide range of high yield savings certificates. Each pays the highest interest rate allowed by law. All interest is earned from day of deposit, compounded daily. Interest is paid at maturity or by a check mailed quarterly or deposited to your checking account. Just choose the certificate that's right for your money.

EFFECTIVE ANNUAL YIELD**	INTEREST PER YEAR
Minimum Deposit \$1,000 for terms of 8 to 10 years	<b>8.17%</b>
Minimum Deposit \$1,000 for terms of 6 to 8 years	<b>7.90%</b>
Minimum Deposit \$1,000 for terms of 4 to 6 years	<b>7.63%</b>
Minimum Deposit \$500 for terms of 2½ to 4 years	<b>6.81%</b>
Minimum Deposit \$500 for terms of 1 to 2½ years	<b>6.27%</b>
	<b>7.75%</b>
	<b>7.50%</b>
	<b>7.25%</b>
	<b>6.50%</b>
	<b>6.00%</b>

\*\*Annual yields are effective when principal and interest are left on deposit for a full year.

**FirstRate Savings Certificates**  
FirstRate Six Month Savings Certificates pay you an interest rate equal to the discount rate paid on U.S. Treasury Bills in effect at the time you purchase the certificate. (The effective annual yield on actual U.S. Treasury Bills is



slightly higher.) With a minimum investment of \$10,000 you earn a high rate of interest over a six-month period. Then you may renew your certificate (again at the prevailing six-month Treasury Bill rate) or withdraw your money without any penalty.

**Regular Passbook Savings**  
First National State's Regular Passbook Savings pays 5% annual interest which is compounded and credited quarterly on balances of \$25 or more.

**Five Star Passbook\***  
This hard-working savings account pays 5½% annual interest from day of deposit and is compounded quarterly (90 day notice of withdrawal is required.) A minimum deposit of \$500 is required to open the account and additional deposits of \$50 or more may be made at any time.

With these eight great ways to save, First National State is sure to be the One for your money.

\*Federal law and regulation prohibit the payment of a time deposit prior to maturity unless three months of the interest (before a penalty) is forfeited. Federal regulations prohibit compounding of interest on First State Certificates.



Serving you locally in Nutley at Franklin Office - 350 Centre Street, Kingsland Office - 578 Kingsland Avenue, Midtown Office - 358 Franklin Avenue and Yantacaw Office - 495 Franklin Avenue

**We're the One for your money.**

First National State Bank of New Jersey

550 Broad Street, Newark, New Jersey 07102 (201) 565-3200 Member First National State Bancorporation/Member FDIC.

**MON-SAT: 8-7** **SUN: 9-5**

**HAUCK'S**

**GREENHOUSES**

47 Montgomery St., Bloomfield

IS PLEASED TO ANNOUNCE ITS ABILITY TO SERVE YOU FOR OUR 74th YEAR

- SPECIAL: NEW GERANIUM VARIETIES
- SUN & SHADE-LOVING FLOWERING PLANTS
- 9 VARIETIES OF HYBRID TOMATO PLANTS (including Ramapo, Beefsteak, etc.)
- LARGEST VARIETY OF GARDEN & VEGETABLE PLANTS IN THE AREA

VISIT OUR 5 LARGE GREENHOUSES where every plant is special

# Complete breakdown of how vote went Tuesday

GENERAL ELECTION FOR BOARD OF COMMISSIONERS — MAY 8, 1979

The Candidates	1	2	3	4	5	6	7	8	9	10	11	12	Total
1-A Albert Guglicelli	13	28	14	18	14	11	14	32	14	27	48	62	295
2-A James Golden	049	079	057	062	35	26	70	98	53	120	29	28	706
3-A Joseph Yeamans	36	43	41	40	32	17	56	82	53	110	34	18	549
4-A Michael Biase	8	14	14	12	24	13	22	38	11	88	36	31	311
5-A Joseph Fornarotto	40	40	51	94	60	41	64	108	58	159	207	91	1013
6-A Vincent Strumolo	104	149	116	151	106	85	236	202	158	170	299	207	1893
7-A Joseph Granese	11	9	8	22	8	5	28	31	14	40	86	34	296
8-A Kevin Kennedy	26	46	31	40	34	17	30	38	20	23	8	9	322
9-A Mary Senatore	86	112	82	124	92	72	141	174	179	170	204	183	1616
10-A Michael Pizzi	81	85	86	112	107	76	111	152	101	125	201	228	1465
11-A Joe McGreevy	161	170	127	169	105	77	151	214	144	115	96	93	1622
12-A Jerry DiNicola	50	50	41	48	49	48	43	62	41	62	42	28	564
13-A Matthew Pica	100	115	113	178	116	93	160	254	138	223	129	93	1712
14-A Harry Romeo	33	26	33	49	40	44	105	107	144	67	110	40	798
15-A Joe Capezera	14	7	10	18	6	7	8	16	12	12	17	9	136
16-A Mike Marotti	138	160	154	200	127	104	187	306	187	201	289	168	2221

GENERAL ELECTION FOR BOARD OF COMMISSIONERS — MAY 8, 1979

The Candidates	1	2	3	4	5	6	7	8	9	10	11	12	Total
1-A Albert Guglicelli	12	17	13	21	16	17	24	25	19	21	22	16	223
2-A James Golden	66	63	74	73	77	53	67	71	93	59	72	41	809
3-A Joseph Yeamans	42	43	65	50	65	37	54	68	79	50	67	27	647
4-A Michael Biase	7	23	9	21	16	12	25	16	28	31	24	28	240
5-A Joseph Fornarotto	53	53	26	70	87	102	106	66	79	103	86	61	892
6-A Vincent Strumolo	116	117	122	117	139	140	202	139	219	132	127	144	1714
7-A Joseph Granese	11	12	7	16	23	10	39	17	13	13	15	13	189
8-A Kevin Kennedy	18	42	22	39	37	20	33	27	24	14	25	26	326
9-A Mary Senatore	67	111	55	132	130	160	314	92	142	155	138	169	1665
10-A Michael Pizzi	65	119	73	73	110	104	107	89	128	84	143	112	1207
11-A Joe McGreevy	128	115	139	147	148	157	173	159	198	117	116	114	1711
12-A Jerry DiNicola	43	40	27	38	33	32	49	49	79	27	42	23	482
13-A Matthew Pica	86	108	108	107	129	153	216	148	230	119	147	142	1693
14-A Harry Romeo	23	55	30	34	42	44	82	53	93	105	133	173	867
15-A Joe Capezera	21	17	9	10	13	8	14	13	13	10	16	12	156
16-A Mike Marotti	109	147	138	155	173	201	276	201	271	170	159	205	2205



**Tilted Victory** — The Miss Victory Monument that has stood in front of Town Hall for the last 50 years was jarred loose from its base last Wednesday night after being hit by a car. The statue was still out of



**Car Injury** — Joseph DeMunno, the driver of the car that hit the Town Hall statue, is injured in the crash. He was listed in fair condition Tuesday at Clara Maass Memorial Hospital.

place the next morning when town employees arrived for work but was restored to its base within hours after that. — Photos by Donna Abate.

## Town Hall monument upset in auto mishap

The Miss Victory Monument that has stood before Town Hall the last 50 years was jarred from its copper-bolted base last Wednesday night when a resident lost control of his vehicle and swerved into the statue. Joseph DeMunno, 43, was parked facing south near 162 Washington Ave. While exiting from the space, DeMunno veered across the street at an angle, jumped the curb over a cherry blossom tree and finally knocked the statue several feet from its base at 152 Washington Ave. DeMunno, 570 Washington Ave., was pulled from his 1977 Ford Thunderbird by ambulance workers

Larry Leeds and Anthony Wieners and Fireman Vincent Abbott and taken to Clara Maass Memorial Hospital where he was listed in fair condition Tuesday. He was receiving treatment for facial injuries.

Police Officers Edward Panier Jr. and Louis Pomponio investigated the accident and issued no summonses. Many workers at Town Hall were surprised to find the statue moved from its accustomed place the following morning, but by 10:30 a.m. Lafera Construction workers on Verona Avenue had resituated Miss Liberty as a community service.

## Pizzi strong sixth; he'll stay involved

Continued from page one.

turnout," said Marotti in the same breath as he expressed his happiness at being re-elected.

Mrs. Senatore attributed her showing both to the glut of candidates — 16 — and the poor turnout, adding, "The people who didn't vote today will be the first ones to complain tomorrow."

Outside of Mrs. Senatore's party at the Chandelier Restaurant where the atmosphere was quiet and in some instances bitter, the mood was one of celebration. After making a brief victory speech to his campaign workers, Pica declared, "And now, let's have a party — that's the best way I know how to thank everybody."

Pica's Washington Avenue headquarters was jammed with the crowd spilling out onto the street.

McGreevy entered the Knights of Columbus Hall on Bridge Street to cheers and hugs from supporters who were especially pleased not only that he had won but that he had topped Mrs. Senatore in the voting. McGreevy, who drew the most public fire during the campaign, was considered by many to be the most vulnerable of the commissioners. In the last election, he had finished fourth behind Mrs. Senatore.

"I thought I'd finish a little higher," a beaming McGreevy said of Tuesday's outcome, "but I'm just very happy to be re-elected." McGreevy said the vote was a vindication of performance as finance director and said of his critics, "They were just taking potshots at me."

McGreevy, who won his fourth term, and his workers waged a steady door-to-door campaign that supporters credited for his showing. A quiet but happy crowd at the Branch Brook Manor received the thanks of Strumolo who was re-elected for a fourth term. The result had been as expected — Strumolo finished second last time around —

and there was little of the wild joy seen at other election parties.

Although he did not win election, State Motor Vehicle Department Inspector Michael Pizzi was still pleased with the results. "I'm happy. I came 600 votes under an incumbent," Pizzi said. "I'll be around, the people will hear from me." In his first try for elective office here, Pizzi received 2,713 votes.

Local veterans' leader Joseph Fornarotta also ran a strong race, finishing with 1,929 votes. He was followed by policeman Harry Romeo with 1,690.

Former Councilman-at-Large James Golden and lawyer Joseph Yeamans, who ran as a team, received 1,543 and 1,211 votes, respectively. The two had been given the highest ratings among the 16 candidates by the Citizens Union of Belleville which advocates, as did Golden and Yeamans, a change in the form of town government.

Insurance broker Jerry DiNicola was the next highest vote-getter with 1,073. From there on, the totals were much smaller. Kevin Kennedy had 665, Michael Attilio Biase 569, Albert Guglicelli Jr. 532, Joseph Granese 502 and Joseph Capezera 304.


## Planning Board will meet tonight

The Belleville Planning Board will hold its regular meeting 7:30 tonight at Town Hall to discuss two site plan applications.

Bell Pontiac, located at 645 Washington Ave., will approach the board to request construction for four new signs to replace the existing ones.

Ernest Stefanelli will also request a subdivision of lots 18, 20, 21 in Block 782 which is located at the intersection of Heckle and Franklin Streets.

**AUDITIONS**  
**DANCERS...Age 14 thru 18**  
**To Be TRAINED for upcoming**  
**MUSICAL PRODUCTIONS**  
Summer Workshops will be conducted by  
**DANIELS STUDIOS**  
In Preparation for the 1979-80 Theater Season!  
AUDITION DATES: Thurs. May 17 and May 24  
TIME: 8:00 to 9:30 P.M.  
**234 FRANKLIN AVE., NUTLEY**



**Sperduto's**  
FINE ITALIAN CUISINE  
Old World elegance  
right in Belleville...  
Discover elegant dining  
only minutes away...  
Please bring your own wine.  
80 Franklin St. Belleville  
Across from St. Anthony's Church  
Call For Reservations 759-7866  
Tues.-Thurs. 4-11 P.M. • Fri. & Sat. 4-7 P.M. • Sun. 2-9 P.M.  
Closed Monday

## This passbook is Peoples helping me!

My People's Passbook and I have done a lot together... Saved for the downpayment for our first home ... put the kids through college ... now it's my retirement fund. Sure, there's a lot of other ways to save. But I like the satisfaction of watching my account grow. With my Peoples passbook I know my savings are safe and I can get to my money whenever I need it without penalty.

**Peoples**  
helping people

**PEOPLES BANK**

MAIN OFFICE — Washington Ave. at Van Houten

AITKEN OFFICE — Franklin Ave. at Joralemon

TRL CITY OFFICE — Bloomfield Ave. at Belmont

BLOOMFIELD OFFICE — Broad St. and Bay Ave.

Member Federal Deposit Insurance Corporation



## times/news

## sports

Mike Lamberti's

## Buc Shots



## Soph talent bolsters track, baseball clubs

There are two sophomores currently attending Belleville High who have quickly made themselves a mark in the local sports scene.

The two are Dana Caruso and Anthony Coco. Caruso was a star attraction on the cross country team and advanced to the state sectionals of the girls' Group IV meet. She is currently on the track team where she has excelled in the half, mile and two-mile races. Just last week she was a winner in all three of those events in the Bucanettes' victory over Irvington.

You will rarely see a sophomore who performs so well on the varsity level in baseball as Anthony Coco. Coco is a pitcher for George Zarfino's team and has put together a 4-0 record and a very impressive ERA. His latest victory was a 5-2 win over Nutley, a game that saw the sophomore strike out three, walk one and pitch the entire seven innings. He allowed just six hits.

On the boys' track team, some excellent performances have been turned in by junior Tom Graham. Graham is the type of runner who can sprint all day and hardly be out of breath. He has been running on the varsity level now for three years, competing in the mile and two-mile. In his freshman year, Tom ran the deuce in a strong 11:07, an excellent time for a freshman. Last year, he cut his time down to 10:43, a good time for a sophomore.

This year, he seems to have everything going in his favor. The junior has consistently run in the 10:40 area in the two-mile and has been breaking the five-minute mark in the mile. Against Irvington, he tied for first in the mile in a time of 4:52 (he tied that race with his older brother Mike) and came back to run a strong race in the two-mile. Earlier this year against Kearny, Tom ran a 4:40 mile and came back to run an equally strong 10:38 two-mile.

Performers such as these are good reasons to believe that the athletic program at Belleville High will be getting stronger in years to come.

**Joe Zarra, a very popular figure** around Belleville High, was assistant wrestling coach at Seton Hall this past year. Zarra held a similar post at Belleville for four years and is still the director of the Belleville recreation mat program. One program runs from November to March and another begins in March and lasts the entire summer. The current program is being held at Belleville High Tuesday and Thursday nights from 6 until 7:30 p.m. According to Zarra, "The program is an open wrestling format. It is for schoolboys from the grammar school level to the high school level. Occasionally we get some wrestlers from other towns who wish to work out and stay in shape, and we're always glad to have them."

It's the fourth year for this particular program, the other that Zarra heads up during the winter months has been in effect now for eight years. "Some of our finest wrestlers have come out of this program," noted Zarra.

**Chris Trémel, who was** the number two wrestler in the nation this past year at college used to work out with us as did Chris Musmanno, who was runner-up in the state tournament this past year," continued Zarra.

Musmanno has been working in the program since the fourth grade. The town has always taken great pride in wrestling, and with a guy like Zarra in charge of the programs, it is no wonder that the teams are always successful. He compiled an unbelievable record as javayee coach at Belleville High, and this past year was assistant coach for Seton Hall, a team that was seventh in New Jersey and brought home a state champ. Seton Hall was also the top team in Parochial A.

A couple of weeks ago, I spoke of a former Belleville athlete, Jim Corino, who was recently named the all-area basketball coach, guiding Lyndhurst High. Corino had turned around a losing team into an 18-6 club that made a visit to the Group II final.

**Now Corino has earned a new title.** Just recently, Jim was named the athletic director at Lyndhurst, a tremendous honor considering that in the 53 years of athletic competition at that school, there have been just two athletic directors. He succeeds Harold Brown who steps down after 32 years in that position.

Corino is a 1966 graduate of Belleville High. During his stay there, Corino was a member of the National Honor Society and was named recipient of the American Legion Award as the top student athlete in his class. He was ranked in the top 10 percent, 38th in a class of 410. He was a member of the Key Club and in his senior year was the treasurer. He was also the treasurer of the Varsity Letterman's Club. In addition to all this, Jim was also the captain of the 1965 Belleville football team.

**Corino went on to Trenton State College** where he played varsity football and golf. He was captain of the 1969 football team and received an honorable mention as an all-conference quarterback. At college, Corino was treasurer of the Men's Athletic Association and treasurer and sergeant-at-arms of the Sigma Tau Chi fraternity.

Corino coached two undefeated freshman squads at Lyndhurst in 1970 and 1971. But he had a very rocky road to success in basketball. In his first 38 games, Corino lost 37 times, the lone victory over Garfield, a team that was winless all season long.

Corino has worked hard to get where he is today and our town should look up to this Belleville product with great pride and respect.

Speaking of great pride and respect, let's take some away from Larry Bird. Bird, you might remember, was named the college basketball player of the year. He led his unknown Indiana State Sycamores into the NCAA finals. So far so good, right?

**Well now Larry Bird** would like to be the richest rookie in the history of the NBA. Last year he was drafted by the Boston Celtics but opted to finish his college career. The Celtics are currently trying to negotiate with him, but Bird is asking \$1 million a year. At this time, the two sides are at a standstill.

Personally, I think the Celtics are making a good move. The very idea that Bird could ask for that kind of money, considering that he has never played a moment of pro ball, is absurd. There are many great players in the NBA, players such as Elvin Hayes and Moses Malone, who aren't making anything near that amount but who have been playing in the league for a number of years. When will all this big bucks talk slow down and the talk go back to sports? If Bird receives anything near that figure, he will have helped make sports in this country, perhaps irreparably, a quest for wealth alone instead of excellence.

## Diamondmen knocked from GNT by Campers

By Mike Lamberti

Over the past couple of years, the rivalry between Belleville and Irvington has been quite intense in the sport of baseball. One of the most memorable games was a 14-inning thriller in 1975 that the then top-seeded Campers won 4-1.

Since that game, Belleville has come out on top of Irvington, winning five of the last seven games over the past four years. That string included a 5-2 Buc victory a few weeks ago. Last Saturday, the teams tangled in one of the most prestigious baseball tournaments in the state, the Greater Newark Tournament. Belleville was the top-seeded team in the tournament, but the Campers after an 0-4 start had won five games in a row.

The end result was that the long winning streak outdid the top seed as Belleville lost to the Campers 3-1.

The loss eliminated the Bucs

from the GNT and for the second year in a row, in the first round. Last year, the Bucs were beaten by an upstart longshot team from Columbia, which eventually went on to win the tournament.

Last week did have some bright spots though, as Belleville upended both Essex Catholic and Nutley. The Bucs' record is currently 9-3, but the loss to Irvington knocked the Bucs out of the state rankings and dropped them from third to fourth in the county ratings.

Tomorrow the Bucs will travel to Montclair, in a 3:45 p.m. start. On Tuesday they will host East Orange and on Wednesday will travel to Montclair.

Head coach George Zarfino reiterated the words he has said for the last three weeks. "The pitching has been excellent, the fielding adequate and the hitting disappointing."

said the coach. "Lack of hitting has cost us now in two games, and it will continue to happen unless we snap out of it. I know these guys can do it because they knocked the ball around very hard last year. We still have a chance to win our 18 to 19 games, but we have to start hitting the ball."

Belleville jumped out to a 1-0 lead in the Irvington game off pitcher Milton Hayes. Jim Kelley singled, and two outs later Joe Guarino walked. Carl Garofolo singled home Kelley with what proved to be the Bucs' only run.

Buc hurler Dan Borgo, now 4-1 on the year, was cruising along with a shutout until the top of the fourth inning. In that frame, the Campers used a walk by Joe Nuzo, a double by John Furbeck and a run-scoring single by Al McDonald to grab a 2-1 lead. In the Camper sixth, Ed Fritz singled and came all the way around to score on a Belleville throwing error when Joe Nuzo grounded out.

Despite the loss, Borgo's stats for the game were nine strikeouts and only one walk. Hayes struck out three and walked three before turning the job over to Kevin Douglas with one out in the seventh inning. Douglass finished up and earned the save.

Kelley was perfect at the plate, with two hits in two at-bats. Mike Nicosia had two hits in four trips.

Against Nutley, another fine pitching performance was turned in by sophomore Anthony Coco. Coco won his fourth game without a loss as he pinned down the hot Raiders bats 5-2. Jerry Corsi took the loss for the Maroon.

Nutley started the scoring by tallying in its half of the second. Conti walked and moved to third on consecutive singles by Iannarone and

Covello. Frotton hit into a fielder's choice, bringing home Conti.

The Bucs wasted no time in tying the game up. In the top of the third, Nicosia reached on an error by the shortstop. Borgo singled and Jim Tensfeldt walked to load the bases. After a putout, Mike San Giacomo hit into a fielder's choice that brought home Nicosia.

Belleville took a 2-1 lead in the fourth thanks to singles by Anthony Cossentino, Nicosia and a walk to Borgo. The Bucs scored the go-ahead run when Tensfeldt was hit by a pitch.

Nutley tied the game in its half of the fourth, however. Lubertazzi singled and was sacrificed to second by Conti. After Iannarone flied out, Covello singled, driving in Lubertazzi.

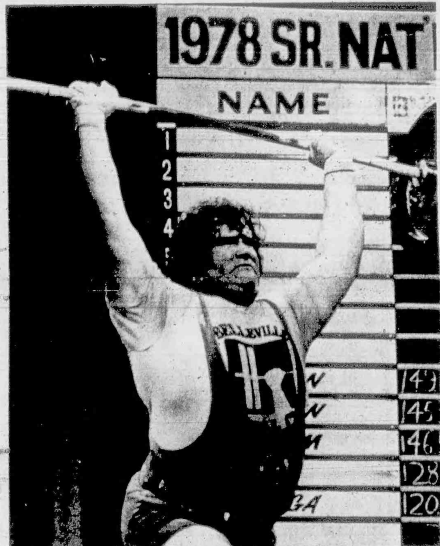
The fifth inning saw Belleville grab the lead for good by scoring two runs. San Giacomo singled and Coffey came in to pinch run. Coffey stole second and went to third on an error by the pitcher. Anthony Dondarski walked and swiped second. With runners on second and third and two outs, Kelley came through with another of his timely pinch hits, a single that brought home both San Giacomo and Coffey and gave Belleville a 4-2 lead.

The Bucs added an insurance run in the sixth when Borgo reached second on the shortstop's error and scored on Tensfeldt's single.

The Bucs had six hits and were error-free. Nutley also had six hits but contributed to its own downfall with four errors. Coco had three strikeouts and one walk, while Corsi had four strikeouts and six walks.

The week started off with a 4-1 victory over Essex Catholic. It was

Please see "Diamonders" on page 12.



**The Big Man** — Three-hundred-fifty-four-pound Terry Manton will be among several members of the Belleville Barbell Club competing Saturday and Sunday in the U.S. Senior National AAU Weightlifting Championships at Ice World in Totowa. For tickets, meet director Bucky Cairo a call at 759-0833.

## Passaic Valley blank leaves golfers at 8-2

By David S. Vaughan

Double wins over Nutley and Essex Catholic and single victories over Montclair and Passaic Valley have given the Belleville golf squad six wins in its last seven outings. The club's only setback in the last two weeks came against Glen Ridge. Overall, the Bucs are now 8-2.

Versus Nutley, the Buc linksmen edged by the Raiders in their first meeting 10½-7½ but blew by them in the next match 16½-1½. Number one man Chris Lowrey fired a sparkling 37 in the team's second outing and bested Nutley's top-swinging John Gorman.

Both matches with Essex Catholic were far from exciting as Belleville breezed twice 15-3 and 17½-½. Sandwiched in between the wins over Essex and Nutley was a loss to Glen Ridge, only the club's second of the campaign, 10-8. Only one of the Bucs could break 46 on that particular day, and Belleville actually did well to grab eight points for the match.

On May 1, Belleville downed Montclair for the second time in the season, 13½-4. Again Lowrey shined, firing a 38 and gaining three points.

In a four-man contest with Passaic Valley Monday, the Bucs won all of their matches and chalked up their eighth victory 12-0. Lowrey finished with a 43 followed by second-man Pete Bukunus's 44, Ron

Wittman's 45 and Anthony Rosania's 43.

"I'm really very satisfied," said BHS link Coach Mike Salzarulo. "Our two losses have been to a couple of real decent teams. The Caldwell match this week could be tough, but our other two matches should be wins for us."

The Bucs faced Caldwell Tuesday, Kearny yesterday and are at Passaic tomorrow.

By John Jurich

The real story of the Goodwill Regatta for Belleville took place not on Saturday when the final competition was held but on Friday when eliminations removed the Buc oarsmen from contention. The Blue-Gold finished a distant third in the annual regatta with four points, behind champion Nutley with 15 and runner-up Kearny with 11.

"It stunk," said BHS Coach Sam Giuffrida of the outcome of the regatta for his team. "I'm very disappointed in our varsity performance. The varsity eight rowed well but made a tactical mistake — they rowed too low."

The Bucs' stroke was about 32 to the Kards' 36. "Had we raised the stroke," we could have stayed with them," said Giuffrida. "I'm not saying we would have beaten them, but it would have been a different race."

The varsity was defeated by four seconds.

"The junior four, seeing what happened to the varsity, raised their stroke to 38 or 39," noted Giuffrida.

The result was a three-and-a-half-second loss to Nutley. The junior eight boat, meanwhile, hampered by injuries and the moving of two of its best oarsmen to the varsity, lost by six-and-a-half seconds to the Raiders in the eliminations. "The entire portside was out most of the week with injuries and illness," remarked Giuffrida. "But they're a gutsy bunch of kids and they gave it their all."

In the Goodwills Saturday, the freshman boat provided the first Belleville win, beating Kearny by nine-tenths of a second. "We're really pleased with the crop of youngsters we have coming up," said Giuffrida.

The Blue-Gold's third boat defeated Kearny's by slightly over two seconds. Unfortunately, that victory did not figure in the overall point total.

"Saturday, the senior four just fell apart," said Giuffrida. The crew rowed an extremely high 40 strokes a minute and burned itself out, losing to Nutley by slightly over five seconds.

Coach Giuffrida now hopes to put the disappointments of the Goodwill Regatta behind his crews as they prepare for the Poughkeepsie Regatta this Saturday. The senior and junior fours—freshman, third boat and two girls' crews will be competing for Belleville.

Some changes are in store aboard the senior four. Giuffrida was holding seat racing this past week, switching a man at a time on the shell to see who would make the most effective crew. "Right now we're in a state of flux," the coach said Monday, "but the junior four will stay the way it is."

**BOAT NOTES:** Final dual records for the season were as follows: varsity eight, 3-3; senior four, 3-1; javayee eight, 5-2; junior four, 2-2; freshmen, 6-1; third boat, 5-0.



**Bright Spot** — The freshman shell cruises back to the dock after beating Kearny in the Goodwill Regatta Saturday. The frosh and third boat were the only winners for Belleville in the annual event as the Buc oarsmen finished a distant third to Nutley and Kearny.

# Softball squad loses magic touch and two

After starting the week off with a 19-4 trouncing of East Orange Catholic, the Belleville High softball team temporarily lost its winning touch as it dropped decisions to Caldwell and Nutley.

The team record is now 5-3. On Tuesday, the squad hosted East Orange Catholic again, this time in the first round of the Essex County Tournament. Yesterday, the Buccanettes traveled to Passaic and tomorrow will be on the road at Montclair.

The East Orange contest was really no contest. The locals scored twice in the first inning. With one out, Denise Zarra walked and came in on a Denise Jiliano single. Joyce Iacullo then brought home Juliano with a single.

The Blue-Gold tacked on five runs in the second without the benefit of a hit. Consecutive walks to Leonora Sibius, Rose Corio, Toni Sperduto, Zarra, Dawn Ritacco and Juliano, a sacrifice by Iacullo and another walk to Rose Leonidis accounted for the runs and a 7-0 Buccanette lead.

The Bucc pitcher, Sibius, was coasting along and had a shutout until the fourth inning when the visiting team scored three teams to slice the deficit to 7-3. The game remained close until the bottom of that inning when the Buccanettes scored 12 times to put the contest totally out of reach. East Orange Catholic scored once more in the fifth.

Sibius was the winning pitcher as she hurled an abbreviated distance. The losing pitcher was Nina Bruno. She struck out five but hurt herself by yielding 17 walks.

The Caldwell game was a complete disaster for the Buc girls. The suburban school tallied once in the second, three times in the fourth, once in the fifth and twice in the seventh. The Buccanettes were shut out.

## Diamonders trip Nutley

Continued from page 11.

the Bucs' second win of the year of their rivals from Newark, the first win a 7-1 triumph. In this game, Belleville used the hot pitching of Danny Borgo, who earned his fourth victory, to win it. Borgo pitched his usual outstanding game as he allowed no runs on just one hit, a bunt single by Alberto with two out in the fourth inning. The losing pitcher was Pat Ganella who fanned four and walked five.

Essex actually led the contest until the sixth inning. The Eagles grabbed a 1-0 lead in the fourth when Krzyzefski walked and moved to second on a sacrifice bunt by Floyd. Joe Reto was intentionally walked and Krzyzefski scored when Perrotta reached on a fielder's choice and walked five.

Belleville bunched all its runs in the sixth inning. Dondarski led it off with a bunt single. Nazden, in an attempt to sacrifice Dondarski to second, was credited with a single because the Eagles' throw to second was late and all hands were safe. Guarino reached on a bunt single to load the bases. Nicosia singled home a run, and Borgo reached on a fielder's choice that saw Nazden get thrown out at third. Tensfeldt then broke the tension and the tie with a triple that brought home three runs. All told, the Bucs had seven hits, all off Ganella who pitched the entire game.

## Bellevillite chosen to play in Coca-Cola Golf Classic

Colleen Binkiewicz of Belleville is one of four amateurs selected to participate in official tournament play with the Ladies Professional Golf Association professionals in the Coca-Cola Classic. The event will be held May 14-20 at the Upper Montclair Country Club in Clifton.

Under a new ruling, only amateurs with handicaps of five or less were considered.

The Pro-Am segment of the classic May 16 has been sold out since April 2. Notables who will be teeing off with the pros that day include Dina Merrill, Gov. Brendan Byrne, Andy Williams, Joe DiMaggio, Whitey Ford, Phil Rizzuto, Yogi Berra, Kyle Rote, Alex Webster and John Gambing.

LPGA players who will compete

are defending champion Nancy Lopez, Amy Alcott, Kathy Whitworth, Sandra Palmer and many others.

Tickets will be available at the tournament site at \$5 for any one day. Among the institutions benefiting from the classic is Clara Maass Memorial Hospital. Proceeds will go directly to its non-profit health care programs. For more information, call 365-0800.

**SUIT CLUB WINNERS**  
MON: L. SOLIMINE  
BLOOMFIELD  
FRI: F. OLIER  
NUTLEY  
FRANKLIN MEN'S  
SHOP  
667-0189

Call for Appointment: 751-5444  
AUTO SERVICE CENTER OPEN 9 AM to 7 PM

ON SALE THRU SAT.



**Master Charge** or **Visa** accepted at all Kmart stores

**Master Charge** or **Visa** accepted at all Kmart stores

**Complimentary TIRE MAINTENANCE**

**ECONOMY 4-PLY**

**1988**

Plus F.E.T. 1.62 Each

✓ 7 Multi-siped Tread Ribs  
✓ "78" Series Tread Design  
✓ 4-Ply Polyester-cord Body

All tires plus F.E.T. each  
Whitewalls 2.88 More Each

**MOUNTING INCLUDED - NO TRADE-IN REQUIRED**

# KM 78 — BLACKWALLS

Our Reg. 22.88 — A78x13

SIZES	REG.	SALE	F.E.T.
SPR114 22.88	<del>21.88</del>	1.00	
SPR114 22.88	<del>24.88</del>	1.00	
SPR114 22.88	<del>25.88</del>	2.00	
SPR114 22.88	<del>27.88</del>	2.00	
SPR114 22.88	<del>28.88</del>	2.00	
SPR114 22.88	<del>29.88</del>	2.44	
SPR114 22.88	<del>30.88</del>	2.44	
SPR114 22.88	<del>31.88</del>	2.44	
SPR114 22.88	<del>32.88</del>	2.44	
SPR114 22.88	<del>33.88</del>	2.96	

\*Wholesale only

# 19<sup>88</sup>

Plus F.E.T.  
1.62 Each

- ✓ 7 Multi-siped™ Tread Ribs
- ✓ '78' Series Tread Design
- ✓ 4-Ply Polyester-cord Body

All tires plus F.E.T. each

Whittalls 2.88 More Each

**STEEL-BELTED RADIAL**

**KM RADIAL 225 WHITEWALLS**  
Our Reg. 43.88  
AR78x13

**2988**

Plus F.E.T. 1.86 Each

✓ 2 Radial Plies Polyester Cord  
✓ 2 Steel Belts  
✓ Exclusive K mart  
5-Rib Tread Design

All Tires Plus F.E.T. Each

**MOUNTING INCLUDED - NO TRADE-IN REQUIRED**

**ANOTHER HOME SOLD THRU THE PROFESSIONALS AT THR Co. TOWN HOUSE REALTY CO. OF NUTLEY**

85 Franklin Avenue, Nutley, N.J. 07110  
Telephone (201) 284-0064

Member Bloomfield, Glen Ridge, Belleville and Nutley Board of Realtors

58 Prospect St. Belleville  
OUR SERVICE DOESN'T COST IT PAYS!  
Realtor MLS 2840064

**CARB CLEANERS**  
Sale Price **88¢** Ea.  
16-oz. liquid or 13-oz. spray carburetor cleaner.

**DIGITAL CLOCK**  
Our Reg. 24.88  
**1688**  
Fits on, under or in the dash. Shows hour, minute, second.

**5-GAL. GAS CAN**  
Our Reg. 12.88  
**1088**  
Study can with snap vent. flexible spout, handle.

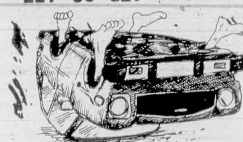
**GREASE GUNS**  
Our Reg. 6.37  
**444** Each  
Mini-pack with refill cartridge or lever-action gun.

**AIR PUMP SALE**  
Our Reg. 4.88  
**377**  
High-pressure hand pump inflates tires and toys.

**SPLASH GUARDS**  
Our Reg. 3.27  
**227**  
Choice of stainless steel or all-rubber, no-drill guards.

MAIN AND JORALEMON STREETS BELLEVILLE

LET US GET YOUR CAR



BACK ON ITS FEET!!

TOYOTA TROUBLES?

Most repairs in one day!

New+rebuild TOYOTA parts in stock



OFFICIAL NEW JERSEY REINSPECTION STATION LIC # 1303

EXTRA GOOD AUTOMOTIVE

267 RIVER ROAD  
NORTH ARLINGTON, 998-4651  
Seven Blocks North of the Belleville Bridge

"Toyota Our Specialty"

MECHANICS CERTIFIED BY NATIONAL INSTITUTE FOR AUTOMOTIVE SERVICE EXCELLENCE

**K mart AUTOMOTIVE SERVICE POLICY**  
K mart agrees to perform only work and services for your benefit. K mart does not guarantee, nor does it warrant, the work or materials used in any repair or service. K mart's right to decline any service which is not in the best interest of the customer or which would be a waste of time or money. K mart's right to decline any service which would be a waste of time or money. K mart's right to decline any service which would be a waste of time or money.

**QUALITY 'TRAYWAY' 48' BATTERY**  
Our Reg. 48.88  
**4288** With Exchange

**DISC/DRUM BRAKE JOB**  
Sale Price - 4 Days  
**6388**

**HEAVY-DUTY SHOCK SALE**  
Sale Price **596** Each

**SERVICES INCLUDE:**  
1. Install quality front brake pads and brake lining on rear wheels.  
2. Resurface rotors and turn drums.  
3. Inspect front calipers.  
4. Rebuild or replace cylinders (if possible).  
5. Repack inner and outer bearings.  
6. Bleed hydraulic system and refill.  
7. Inspect master cylinder.  
8. Adjust brakes and road test.

**HANDY CAR CONSOLE**  
Our Reg. 4.97  
4 Days Only **388**

A snack tray, litter basket, tissue holder plus a roomy miscellaneous compartment. In colors.

**AUTO SOUND SPECIALS**

**SAVE \$21**  
Variable Tone Control, Stereo Indicator Light, Balance Control, 20-OZ. MAGNET, SK6922T, 6x9" WOOFER, TWEETER, MIDRANGE, SAVE \$10!

**DELUXE AM/FM/8-TRACK INDASH PUSHBUTTON**  
Our Reg. 148.88 - 4 Days  
**12788**

AM FM radio with local-distance reception switch. Plus 8-tr. player. Adjusts for most U.S. cars.

**AUDIO GRAPHIC EQUALIZER**  
Our Reg. 74.88 - 4 Days  
**5996**

Boosts stereo output to 40-watts of power. Controls for bass, mid-range, highs.

**6x9" TRIPLE-PLAY STEREO SPEAKERS**  
Our Reg. 58.88  
4 Days **4888** Pair

High fidelity, full-range 3-speaker-in-1, with 20-oz magnet. Up to 50-watts peak power.

**SAVE 14.92** Front/Rear Fader

**5-BAND TONE CONTROL**



# Buc cinder times continuing to drop — so does track team's season mark

By Mike Lamberti

Despite some good individual efforts, the Belleville track team swallowed defeat last week at the hands of Irvington and Verona.

The team record is now 3-6. On Tuesday the squad was host to highly rated Newark Tech. Yesterday the Bucs competed in the Essex County Relays at Nutley. On Saturday the team will travel to Long Branch to take part in the Long Branch Relays.

The Irvington meet saw the Buc fall 77½-52½. The Buc were not without some pleasant moments, however. The locals swept the mile run with Mike and Tom Graham tying for first in a time of 4:52 and Dean Santulli coming in a step later at 4:53. "Those guys did a great job," said BHS head coach Rich Ruffalo. "The meet was at Irvington's track, and you have to run five times around the track for a mile," he noted.

## Boxing tourney coming May 25

The Veteran-Boxers Social Club of Essex County has announced plans for an amateur boxing tournament at the Belleville High School gym Friday, May 25.

The announcement was made Sunday afternoon during a meeting at the club's headquarters here. The tournament will be sanctioned by the New Jersey Amateur Athletic Union, and promoter Sammy Sanges is looking for boxing talent from Essex, Hudson and Passaic Counties to fill the card.

Club Vice President Paul Minai has scheduled meetings of the group 7 p.m. today and the next two Thursdays at the club's headquarters, 177 Malone Ave.

## Blood pressure tests scheduled for May 24

The Essex County Heart Association will sponsor a blood pressure screening at Clara Maass Memorial Hospital 1:30-8:30 p.m. May 24 in the institution's main lobby.

Screenings are being conducted throughout the county as part of "Hypertension Month." The purpose of the tests is to educate and identify persons with high blood pressure.

The mile relay team came out victorious when freshman Angelo Centanni broke open a close race with a strong run. Brian McManus turned in his finest performance of the season when he cleared 10 feet in the pole vault and took home top honors.

The Bucs swept the shot put as Joe D'Agostino led the way with a heave of 45-9. Joe DeLorenzo was second and Anthony D'Agostino took third. Rich Gaschke was second in the javelin throw with a toss of 154 feet. Gaschke would have won the event but his last throw, which would have been good enough to win, was called a foul by the officials and "close but no cigar" by Ruffalo.

The Buc's performance at Irvington was their best there in a number of years. In 1975 they were beaten 92-30 and in 1977 were blown away 123-8.

Against Verona, the Buc's came up short 75-55. Verona's strength was in the pole vault where seven athletes cleared the 10-foot mark and blanked the Buc 9-0.

Joe D'Agostino was second in the shot put with his best throw of the season, 48 feet. Joe DeLorenzo was a winner in the discus with a heave of 122-6. Scott Jackson took second place in the high jump and long jump. His performance in the long jump, 19-7, was his best this season. "I think Scott can break the 20-foot mark by the Newark Tech meet," said Ruffalo.

Tom Graham won the two-mile in 10:34 after running a 4:53 in the mile. Mike Graham came in second in the mile at 4:48. John Vaccaro, returning after missing three weeks with a stress fracture of his foot, came out a winner in the 100 and 220.

The mile relay team was beaten but still posted its best time of the season, 3:46. Kenny Duva, the most improved runner on the squad, was second in the quarter. Last season, Duva scored just one point. This year he has responded with 27, and the season is only half way through. "He's done an outstanding job," said Ruffalo. "He's worked quite hard, and it's paid off."

Over at the girls' camp, the Bucanettes took a toughie to East Orange Catholic before rallying to capture their second win of the season over Irvington.

In the East Orange meet, Chickie Liberti was second in the low hurdles in 19.8. Dana Caruso was a winner in the mile and two-mile, and Tamana Nahar was second in those events and was a winner in the half-mile.

Liberti came back to take second in the quarter, while Cecilia Graham won the 220 and was third in the 440. Jessica Valiente was third in both the mile and two-mile.

The mile relay team of Liberti, Runda Esquillo, Jo Anne Frederick and Graham was victorious in 4:58.8. In the discus, Jo Ann La Stella was third at 70-3. Karen Portuese was a winner in the javelin and was third in the high jump. Graham was third in the high jump and Maria DiPaolo took second in the javelin and third in the shot put.

Despite those successes, the girls lost 63-55. "We had a number of injuries," said head coach Debbie Meola. "I think if we were 100 percent healthy we could have won that meet."

The locals came out on top in their meet with the Camptown ladies of Irvington 63-46. Once again, Liberti started out the scoring for the Bucanettes by capturing first place in the low hurdles. Esquillo was second. Caruso had a magnificent day as she was a winner in the mile, half-mile and two-mile. Nahar was third in the mile and second in the deuce.

Edwards had quite a day as she was second in the 440, third in the 220 and won the long jump in a record leap of 16-2, breaking the old mark set by Jackie Wis in 1977. Portuese was a winner in the javelin with DiPaolo second and Sandy Nardone third.

Today the girls travel to Paterson Kennedy and next Tuesday will host Mount St. Dominic.

## Garden Pet victorious as rec softball begins

The Belleville Recreation Men's Softball League opened the 1979 season Monday with games at Belleville Park. There are four leagues of six teams each that will play Monday through Friday at night 6 p.m.

In the Monday night league, Garden State Pet defeated Chief Motors 6-4. Circle II coasted to an easy 22-1 victory over Wallace & Tiernan, and DeBacco Brothers beat Belleville Shoes 13-7.

Tuesday night action saw Roselli's Amoco handily beat Circle Bar 14-2. Marson's Plumbing defeated Red Shingle Inn 11-3, and the 4 J's walloped Scordo Tile 20-4.

Silver Lake took a 17-12 decision over Michael's Towing in the Wednesday night league. Rosmore Pharmacy beat Garden State II 18-6, and in the closest game of the night, Joe's Alignment squeezed by Howard Hustlers 5-1.

Thursday night, through a steady drizzle, Belleville Hess drubbed Clyde Paul Insurance 16-4. Giordano's dropped a 10-7 decision to DeWitt Savings, and Bell-Lap Tavern snuck by Belleville Political and Social Club 7-4.

**Senior League**  
The Belleville Recreation Senior and Intermediate Baseball Leagues got off to exciting starts last week. In the intermediate opener, the Giants edged the Cubs 2-0. The Yankees, behind the pitching of Bob Slater and the hitting of Sergio Chavarria, Mike Murphy and Joe Bunucci, defeated the Mets 5-1. Determined to play, the Braves and Cubs fought

to a 4-4 tie through a steady drizzle. Friday, the Giants recorded their second victory, 7-3 over the Mets.

In Senior League action, the Giants defeated the Cubs 10-7 in the loop's opener. The Cubs had an early 3-0 lead, but the Giants came back on a two-run double by Matt Pitera. Joe DeGregorio had a big, run-producing hit, and Lenny Russo doubled home a run. In other games, the Mets beat the Yankees 8-0. The Braves and Pirates were rained out, and the Cubs snuck by the Mets 3-2.

This is the season for **BLACK CARPENTER ANTS**



Call **BLISS**

Get a Preventive Maintenance program

**676-8888** **BLISS**

A BLISS EXTERMINATOR COMPANY  
One of the Oldest & Largest



## 上海 Shanghai


Treat yourself!  
Why not take out tonight?

Enjoy fine Chinese food orders to take out  
Play N.J. Lottery & Pick It While You Wait

**247 Centre Street  
Nutley, N.J. 07110**  
(near Passaic Ave.)  
phone: 667-2014

Daily: 11:30 - 9:30  
Sat.: 12:00 - 9:30  
Sunday: 12:00 - 8:30

## Butler needs a builder in ESSEX COUNTY



Butler offers a sales territory with a measured volume potential for America's top line of pre-engineered buildings.

To qualify, you need construction know-how, a financial investment, and a supporting organization.

Why not build your future around Butler. It has the strongest manufacturing and marketing system in the industry.

A Butler Building Fabrication Plant is located within 150 miles of this territory.

**BUTLER**


Qualified Applicants Call or Write:  
**BUTLER MANUFACTURING CO.**  
Suite 403, 1770 Bathgate Rd.  
Bethlehem, Pennsylvania 18018  
Phone: (215) 694-0531, 32, 33

## Any way you cut it... it's a snap with a SNAPPER!


That's because a SNAPPER is a top quality, superior performing machine which is easy to maintain and will deliver years of dependable service. It's designed to get your work done faster and to perform more functions than its name suggests. Before you buy a mower, compare the quality and performance features of a SNAPPER. You'll find SNAPPER is worth more because it does more, and its price is competitive with other quality mowers.

SNAPPER walk-behind mowers can broadcast or vacuum, and with inexpensive optional attachments you can mulch cuttings for lawn food and won't have to rake or shred leaves so the catcher will hold over twice as many. SNAPPER extra "High Vacuum" riders can broadcast, bag and vacuum cuttings, leaves and other light litter, even during high moisture conditions.

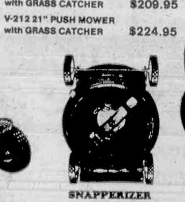
Any way you cut it... it's a snap with a SNAPPER!




**2550 RIDER \$680.00**  
GRASS CATCHER OPTIONAL




**V-182 18" PUSH MOWER with GRASS CATCHER \$209.95**



**V-212 21" PUSH MOWER with GRASS CATCHER \$224.95**



**SNAPPERIZER \$32.00**



**MULCHERIZER \$32.00**

As Advertised On Major TV NPM DISTRIBUTORS, KENVIL 684-5400


**SNAPPER**  
Mowers • Tillers • Tractors

**PASSAIC GRINDING SHOP**  
871-3 Main Ave.  
Passaic

**BELLEVILLE-NEWARK HONDA, INC.**  
163 Washington Avenue  
Belleville

## NUTLEY ...

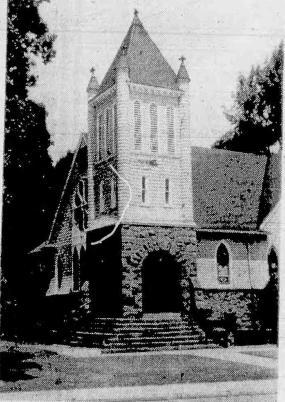
It's History —  
It's Growth —  
It's Future  
Recorded In Our Unique  
**85th. ANNIVERSARY ISSUE OF**  
**The Nutley Sun**



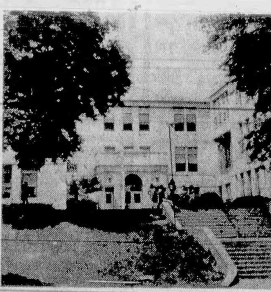
**THE ANNIE OAKLEY HOUSE**

### SPECIAL PUBLICATION

**DATE:**  
**JULY 5, 1979**



**SAINT PAUL'S CHURCH**



**WASHINGTON SCHOOL**

**To Participate In This Special Advertising Medium Please Call:**  
**667-2700**  
**FOR AN IMMEDIATE PERSONAL APPOINTMENT**

# Elbert Rhoades; obituaries Belleville Mason George W. Cutler; former Bellevillite

A service was held May 7 for Elbert Rhoades, 82, who died May 4 at the Christian Health Care Center, Wyckoff.

Born in Newark, Mr. Rhoades lived in Nutley 50 years. He was a banker for the Empire Trust Company, New York City, many years before retiring.

Mr. Rhoades was a member of the Nutley Old Guard, a life member of the Belleville Masonic Lodge 108, and a deacon and clerk of St. Paul's Congregational Church of Nutley. He was also past president of the 25-Year Club of the Empire Trust Company of New York City and a

member of the American Bankers Association. Mr. Rhoades attended Columbia University, and the Alexander Institute. He was a graduate of the American Institute of Banking.

Surviving are his wife, Marjorie; a daughter, Mrs. Lois Nadeau of Lake Lenape, three grandchildren and one great-grandchild.

Arrangements were made by the Johnesse Nutley Home for Funerals. Interment was in Bloomfield Cemetery, Bloomfield.

A service was held April 28 for George W. Cutler, who died April 25 at St. Clare's Hospital, Deaneville.

Mr. Cutler lived in Belleville before moving to Parsippany 22 years ago.

Surviving are his wife, Clara; two sons, George W., Jr. of Stanhope and Richard R. of Parsippany; his father, George Cutler of Belleville; a

brother, Robert of Parsippany; two sisters, Mrs. Millicent Michelli of Belleville and Mrs. Katherine Winkowski of St. Petersburg, Fla., and four grandchildren.

Arrangements were made by the Par-Tory Funeral Home, Parsippany. Interment was in Restland Memorial Park, Hanover.

## William R. King packer, age 61

A service was held May 7 for William Robert King, 61, who died May 3 at Clara Maass Memorial Hospital.

Born in Pennsylvania, Mr. King lived in Newark and Bloomfield before moving to Belleville eight years ago. He was a packer for Wallace and Tiernan, Belleville, 13 years.

Surviving are his wife, Verna; a daughter, Shirley; three sons, Donald, John and Anthony; five brothers, Russell, Charles, Edward, Joseph and Robert; and two sisters, Mrs. Pylis Kinzinger and Mrs. Grace K-aner.

Arrangements were made by the Zarro Funeral Home.

## Irvine Cozzarelli

### MEMORIAL HOME

James J. Cozzarelli, Jr.  
Owner-Manager

Serving Every Religion

276 Washington Ave.  
Belleville, N.J.

759-1114

## Edwin Young; engineer, 78

A service was held May 7 for Edwin C. Young, 78, who died May 4 at Clara Maass Memorial Hospital.

Born in Brooklyn, N.Y., Mr. Young lived in Belleville many years. He was a civil engineer for the state of New Jersey, retiring in 1965.

Mr. Young was a World War II Army veteran and a member of the New Jersey Professional Engineers Association. He was also one of the oldest members of the Montclair YMCA.

Surviving is his sister, Mrs. Jessie E. Hanft of Belleville.

Arrangements were made by George Van Tassel's Community Funeral Home, Bloomfield. Interment was in Greenwood Cemetery, Brooklyn, N.Y.

## Rose Ferrera; dead at age 57

A Mass was offered at our Lady of Mount Carmel Church May 5 for Rose M. Ferrera, 57, who died May 2 at Beth Israel Hospital, Passaic. Born in Newark, Mrs. Ferrera lived in Belleville before coming to Nutley 20 years ago.

Surviving are her husband, Dominick; a daughter, Mrs. Geraldine Donnadino of New Providence; a son, Paul of Nutley; her parents, Josephine and Gerard Frunzi of Belleville; two brothers, Joseph of Verona and John of Belleville; two sisters, Mrs. Lena Monaco and Mrs. Edith Bucciarelli of Belleville, and three grandchildren.

Arrangements were made by the S.W. Brown and Son Funeral Home. Interment was in Holy Cross Cemetery, North Arlington.

## Louis Messineo; machine operator

Louis N. Messineo, formerly of Nutley and Belleville, died suddenly in his sleep April 20 in his home at Edgewater Park near Totms River. Funeral services were held April 23, from St. Joseph's Church, Beverly, with interment in Monument Cemetery, Edgewater.

Mr. Messineo, 89, was a machine operator with the Lionel Corporation until his retirement 14 years ago. He moved then from Nutley with his wife, Anna, to Edgewater Park.

Born in Italy, he came to the United States as a young boy and settled in Belleville. He spent the rest of his life in the Nutley-Belleville area before moving to the New Jersey shore.

Surviving, besides his wife, are a daughter, Mrs. Margaret Narucki of Nutley; a son, Joseph of Edgewater Park; a brother, Charles of Nutley, three grandchildren and two great-grandchildren.



**GRAND UNION**  
SUPERMARKETS



**This Week Plan Your  
Mother's Day  
Celebration**  
With Good Things From Grand Union

**Stainless Flatware**  
This Week's Feature  
**Dinner Fork**  
**39¢**  
Ea. (One each with 20 purchases, one with 10, etc.)

**Fully Cooked - Water Added**

**Smoked Ham**  
Shank End **89¢** Lb.  
Butt End **99¢** Lb.  
Some Slices Removed

**U.S.D.A. Choice Beef Loin**

**Shells of Beef**  
Whole **1.89** Lb.  
Untrimmed 18 to 22 Lbs. Cry-O-Vac

**Boneless Forequarter** **2.29** Lb.  
**Veal Roast** **2.29** Lb.  
**Veal Stew** **1.19** Lb.  
**Veal Breast** **2.50** Lb.  
**Veal Steak** **1.89** Lb.  
**Fresh Veal Patties** **1.89** Lb.

**Smoked Ham Steak** **1.89** Lb.  
**Wholesale Savings**  
**Corned Beef Brisket** **1.79** Lb.  
Kings Treat 7-10 Lbs. Cry-O-Vac

**U.S.D.A. Choice Beef Loin**  
Well Trimmed With Tails **2.79** Lb.

**Family Pack Savings**  
SAVE \$1.49 IN PKGS. OF 3 LBS. OR MORE

**Bologna** **1.19** Lb.  
**Fish Cakes** **69¢** Ea.  
**Chicken Wings** **79¢** Lb.

**U.S.D.A. Choice Beef Loin**  
Well Trimmed No Tails **3.59** Lb.

**Franks & Hot Dogs**  
**Wiener** **1.19** Lb.  
**Beef Franks** **1.19** Lb.  
**Colonial Franks** **1.19** Lb.

**Young Milk Fed - Boneless**  
**Veal Leg for Scallopini** **3.99** Lb.

**Fully Cooked - Water Added**  
**Whole Smoked Hams** **1.09** Lb.  
Untrimmed 10 to 20 Lbs.

**Rib or Loin End and Center Cut**  
**Pork Chop Combo** **1.49** Ea. Lb.  
Pkg. contains one more center chop than end chop.

**Chicken Hot Dogs** **1.09** 1-Lb. Pkg.

**FRESH FISH AVAILABLE TUES. THRU FRI. IN MOST STORES**

**Little Neck Clams** **2.19** Lb.  
**Fresh Shad** **1.39** Lb.  
**Fresh Porgies** **1.99** Lb.

**Chicken** **2.40** Lb.  
**Flounder** **1.99** Lb.  
**Chicken** **2.50** Lb.

**Sliced Bacon** **1.19** Lb.  
**Sliced Bacon** **1.19** Lb.  
**Sausage Links** **1.49** Lb.

**Beef Brisket** **1.89** Lb.  
**Smoked Butts** **1.89** Lb.  
**Canned Ham** **5.89** 5 Lb. Can.

**Regular or Diet**  
**6-Pack Pepsi-Cola** **99¢** 12-oz. Cans.  
With coupon below 75¢ or more

**Liquid Clorox Bleach** **59¢** 1-Gal. Cont.  
With coupon below 75¢ or more

**Kraft Dinner Macaroni and Cheese** **4.100** 7 1/2-oz. Pkgs.

**Cling Grand Union Yellow Peaches** **2.89** 1-Lb. Cans.

**Cup-O-Noodles** **59¢** 2.5-oz. Frozen Food Pkgs.

**Provolone** **1.09** 1-Lb. Cheese.  
**Cookies** **2.29** 1-Lb. Package.  
**Cole Slaw** **49¢** 1-Lb. Container.

**Martinson's Coffee** **1.89** 1-Lb. Can.  
**Sauce** **99¢** 1-Lb. Jar.  
**Spaghetti** **3.10** 3-Lb. Box.  
**Mayonnaise** **99¢** 1-Lb. Jar.  
**Hunt's Paste** **49¢** 12-oz. Can.  
**Grapefruit** **89¢** 1-Lb. Box.  
**Mustard** **69¢** 8-oz. Jar.  
**Coast Soap** **2.89** 2-Lb. Box.  
**Recipe** **89¢** 1-Lb. Box.

**Catsup** **69¢** 1-Lb. Jar.  
**Coffee Mate** **1.79** 1-Lb. Jar.  
**Bread Crumbs** **89¢** 1-Lb. Box.  
**Egg Noodles** **39¢** 1-Lb. Box.  
**Corn Flakes** **75¢** 1-Lb. Box.  
**Mazola** **2.99** 1-Lb. Can.  
**Pineapple** **59¢** 1-Lb. Can.  
**Grape Juice** **1.39** 1-Lb. Can.

**Fries** **2.89** 2-Lb. Bag.  
**Banquet** **69¢** 1-Lb. Box.  
**Ice Milk** **1.29** 1-Lb. Can.  
**Salisbury Steak** **89¢** 1-Lb. Can.  
**Mac & Cheese** **59¢** 1-Lb. Can.

**Fresh Dairy Buys**  
**Cottage Cheese** **79¢** 1-Lb. Cont.

**Kraft Cheese** **1.09** 1-Lb. Cont.  
**Singles** **1.79** 1-Lb. Cont.  
**Promise** **99¢** 1-Lb. Cont.  
**Mazola** **99¢** 1-Lb. Cont.

**Fresh Fruits & Crisp Vegetables**  
**Bananas** **4.99** 4 Lbs.  
**Grapefruit** **3.89** 3 Lbs.  
**Apples** **49¢** 1-Lb. Box.  
**Squash** **39¢** 1-Lb. Box.  
**Oranges** **9.100** 9 Lbs.

**Sweet Corn** **6.79** 6 Ears.  
**Escarole** **3.10** 3 Lbs.  
**Onions** **39¢** 1-Lb. Box.  
**Avocados** **59¢** 1-Lb. Box.  
**Red Radishes** **2.29** 2 Lbs.

**Health & Beauty Aid Buys**  
**Stayfree Maxi Pads** **2.29** Pkg. of 30.  
**Vaseline** **59¢** 3 1/2-oz. Jar.  
**Pampers** **2.99** Pkg.  
**Vaseline** **99¢** 1-Lb. Jar.  
**Panty Shields** **1.99** Pkg. of 30.

**For Mother's Day**  
**Tree Plants** **12.99** 12" Pot.  
**Foliage** **4.99** 12" Pot.  
**Baskets** **2.99** 12" Pot.  
**Orchids** **1.99** 12" Pot.

**SIX PACK - REGULAR OR DIET**  
**Pepsi Cola** **6.99** 12-oz. Cans.  
WITH THIS COUPON AND PURCHASE OF 75¢ OR MORE IN SELECTED ITEMS AT ANY GRAND UNION STORE MAY 12 THROUGH MAY 12 LIMIT ONE COUPON PER CUSTOMER

**LIQUID**  
**Clorox Bleach** **59¢** 1-GAL. CONT.  
WITH THIS COUPON AND PURCHASE OF 75¢ OR MORE IN SELECTED ITEMS AT ANY GRAND UNION STORE MAY 12 THROUGH MAY 12 LIMIT ONE COUPON PER CUSTOMER

**20¢ Off** (637)  
WITH THIS COUPON AND PURCHASE OF ONE PKG. OF 170  
**Q-Tips Cotton Swabs**  
COUPON GOOD MAY 4 THRU MAY 12 LIMIT ONE COUPON PER CUSTOMER

Prices effective Sunday, May 13 thru Saturday, May 12 at all Grand Union stores in New Jersey (except Ewing and Hamilton), Rockland and Orange Counties. In order to assure a sufficient quantity of sale items for all our customers we reserve the right to limit sales to 2 packages of any item unless otherwise noted. Not responsible for typographical errors.

GEORGE F. KIERNAN  
PATRICK J. KIERNAN

**KIERNAN**  
FUNERAL HOME

(Non-Sectarian)

101 UNION AVENUE  
BELLEVILLE, N.J.

759-3503



# Classified

## New Direct Line

### 667-3000

OR/759-3200

#### CLASSIFIED ADVERTISEMENTS ARE PUBLISHED IN BOTH SUNBANK NEWSPAPERS

**THE NUTLEY SUN**      **THE BELLEVILLE TIMES**

**RATES EFFECTIVE APRIL 13, 1978**

MINIMUM 15 WORDS FOR  
INCH RATES PER COL. INCH

ONE INCH OR MORE      \$5.00  
TWO INCHES OR MORE      \$4.50  
THREE INCHES OR MORE      \$4.00  
OVER TEN INCHES      \$4.00

ASK ABOUT DISPLAY DISCOUNT RATE  
FOR INSERTIONS RUNNING 26 WEEKS  
DEADLINE FOR SPACE COPY AND  
MATERIAL - 12 NOON TUESDAY

667-3000      759-3200

#### USE LIST BELOW FOR QUICK REFERENCE!

- |   |  |
|---|--|
| <b>ANNOUNCEMENTS</b><br>AUTOMOBILES<br>AUTO PARTS & SUPPLIES<br>AUTO SERVICE<br>AUTO WRECKERS<br>CAMPER & TRUCKS<br>MOTORCYCLES   | <b>BUSINESS SERVICES</b><br>ACCOUNTING & TAX<br>AIR COND. & REFRIG.<br>ALUM. PROD.<br>BATHROOMS & KITCHENS<br>CARPENTERS & BUILDERS<br>CARPETING & SERVICE<br>CEILING<br>CHIMNEY SERVICE & REPAIR<br>CLEANING & DYING<br>CONSTRUCTION<br>DRIVEWAYS<br>ELECTRICIANS<br>EXTERMINATORS<br>FENCING<br>FLOOR SERVICE<br>HOME IMPROVEMENTS<br>INSURANCE<br>JUNK DEALERS<br>LANDSCAPING<br>LANDSCAPING SERVICE<br>MAINTENANCE<br>MISC. SERVICES<br>MOVING & STORAGE |
| <b>PAINTING</b><br>PIANO TUNING<br>PLUMBING & HEAT<br>PROFESSIONAL SERVICES<br>RECREATION<br>ROOFING & SIDING<br>TITLE SERVICE<br>TIRE SERVICE<br>UPHOLSTERY<br>CHILD CARE<br>NURSERY SCHOOLS<br>FOR SALE<br>ANTIQUES<br>BOATS<br>Flea Markets<br>GARAGE SALES<br>MERCHANDISE<br>PETS<br>WANTED TO BUY<br>HELP WANTED<br>SITUATIONS WANTED<br>INSTRUCTIONS<br>LOST & FOUND<br>MORTGAGES & LOANS<br>REAL ESTATE<br>BOARDING<br>BUSINESS OPPORTUNITIES<br>FOR RENT<br>FOR SALE<br>FURNISHED ROOMS<br>REAL ESTATE WANTED<br>SUMMER RENTALS<br>WANTED TO RENT |  |

#### Be Wise - Advertise

The coupon below is for your convenience in placing a minimum  
advertised by Sun in the Classified Section of the Nutley Sun & Belleville  
Times News.

**DEADLINE - Tuesday 12 Noon.**

Name \_\_\_\_\_

Address \_\_\_\_\_

City \_\_\_\_\_ State \_\_\_\_\_ Zip \_\_\_\_\_

Phone \_\_\_\_\_ Amount Enclosed \_\_\_\_\_

Date Desired \_\_\_\_\_ Classification \_\_\_\_\_

Minimum Rate is up to 15 words for \$4. Each additional word  
20¢. 5 coverage size words per line. Phone number counts as 1  
word.

Make check or money order payable to:  
**Nutley Sun,  
777 Bloomfield Ave.,  
Nutley, N.J. 07110**

For Additional Information,  
Call 667-3000  
or 759-3200

#### ANNOUNCEMENTS

**HONEY BEE VIE**  
TRAWLWAYS LUXURIOUS  
BUS

Proudly Presents  
RESORTS AND OTHER  
CASINO CARAVANS

**SUMMER SPECIAL \$25.**

Monday thru Sunday  
Nutley Departures:  
Weekdays departure 7:30 am  
& Sun. 8 am - 8 pm

**CONTINENTAL BREAKFAST**  
• DOOR PRIZE  
• VALET SERVICE  
• LAYOVER ON BUS  
• HOSTESS ON EVERY BUS

Sat. & Sun. Fabulous buffet  
in the Wedgewood Pavilion.

Mon. thru Fri. Las Vegas  
Fabulous Show Review  
"BOARDWALK BRAVO"  
Plus stuffed coupon luncheon.

**COCKTAIL RENDEZVOUS SHOW**  
Cocktails must wear jackets.  
LOTS OF FUN & EXCITEMENT

May 19th, June 11, 16 & 23  
Aug. 11 & 25

**SPECIALIZING IN GROUPS**  
OF 38 OR MORE

Please call EARLY for summer  
reservation. 751-4578 or 751-  
1885

"You Will Be So Happy You  
Called, Promised!"  
HONEY TORT, Your Hostess 757

**BUS RIDE**

1 To Philadelphia  
Every Tues. & Thurs. 3:30  
Saturday, bus leaves 3:00

Atlantic City Bus Ride  
Sunday: June 3rd  
& every Friday at 5 p.m.  
starting June 18th.

Call "KATHY"  
751-6364 or 751-6249

**LAS VEGAS TRIP, Sept. 12-16**

#### AUTOMOTIVE

1967 VOLKSWAGEN, Fair-  
back sun roof, rear window  
new elec sys. \$400.  
751-6249 667-2485

1971 FORD TORINO, V-8,  
p.p., a/c, 4 dr. hardtop.  
New accessories. Excellent  
transportation. Call 661-2506.

1970 AMERICAN MOTORS,  
HORNET 6 cyl. auto, trans.  
P/S, \$750. Call 667-4391

#### AUTOMOTIVE

**1969 CHRYSLER**  
4 Door Motor in excellent  
condition. Needs some body work.  
P/S, P/B, A/C, 56,000 miles.  
\$350.  
751-5498

**1974 VEGA**  
AUTO, P/S, AM/FM RADIO.  
ORIGINAL OWNER. EXCEL-  
LENT CONDITION. 34,000  
MILES. BEST OFFER. CALL  
AFTER 4:30 PM.  
667-8153

**BUICK**  
**ANDY CARRINO**  
Sales Representative  
Nutley resident  
Nursery Schools  
FOR SALE  
ANTIQUES  
BOATS  
Flea Markets  
GARAGE SALES  
MERCHANDISE  
PETS  
WANTED TO BUY  
HELP WANTED  
SITUATIONS WANTED  
INSTRUCTIONS  
LOST & FOUND  
MORTGAGES & LOANS  
REAL ESTATE  
BOARDING  
BUSINESS OPPORTUNITIES  
FOR RENT  
FOR SALE  
FURNISHED ROOMS  
REAL ESTATE WANTED  
SUMMER RENTALS  
WANTED TO RENT

**BEVILLIA BUICK, INC.**  
Rt. 17 & Union Ave.  
East Rutherford, NJ.  
939-6800

**AUTO PARTS & SUPPLIES**

FOR COMPLETE LINE OF  
★ AUTO PARTS  
★ TIRES  
★ ACCESSORIES  
IT'S  
**CAR CARE**  
46-48 Franklin Ave., Nutley  
667-3962  
CAR CARE EXCLUSIVE  
DRIVE-IN  
INSTALLATION CENTER 1014

#### MODERN AUTO PARTS

Open 7 Days  
**SUNDAY: 10-1 p.m.**  
★ PARTS ★ PAINTS  
★ MACHINE SHOP

"Mechanic on duty 7 days"

**DISCOUNT PRICES!**  
82 RUTGERS ST.  
BELLEVILLE  
759-5555 920

**AUTO SERVICE**

**PROTECT YOUR CAR!**  
With vinyl side moldings.  
Installed \$29.95

**Vinyl Tops & Replacements**  
Sun Roofs

**TOPS-UNLIMITED**  
46 Jaramolam St., Belleville  
Call for Free Estimate  
751-1390 1018

**Kirk's Automatic Transmission**  
"Customers are our solamen"  
One of the most reputable and  
finest transmission specialists  
in the area.

**FREE ESTIMATES**  
ONE DAY SERVICE  
ALL WORK  
DOMESTIC AND FOREIGN

**998-9666**  
20 RIVER ROAD 5/10  
at Belleville Pike  
NO. ARINGTON, NJ

**1978 TRIUMPH TR7**  
Fully loaded  
25 MPG  
Burgundy w/cream velour int.  
A/C, AM/FM, 8 track,  
5 Sp. Radios,  
Asking \$7200.  
Call 751-6414  
Anytime

**1977 DODGE ASPEN**  
Station Wagon  
\$4200  
Special Edition Model.  
Black with burgundy in-  
terior. A/C, P/S, P/B,  
rear window defroster,  
AM/FM radio, snow  
tires, 6 cyl. mag wheels.  
27,000 miles. Needs  
right fender work and  
new grill. Will adjust  
price for repairs.  
Call 661-3323

**1975 PONTIAC**  
9 Passenger Safari Station  
Wagon, P/S, P/B, Air, P/rev  
window, 58,000 miles. Very  
Good Cond. \$2000.  
Call 667-2383 anytime

**1975 GMC JIMMY**  
4 WD, auto, V8, air,  
AM/FM, P/S, P/B, new  
radials, 5 mag, push  
door, outside tire rack,  
high Sierra pkg. Excel-  
lent Condition! 36,000  
miles.  
BEST OFFER  
751-6414

**1973 CHEVY**  
4 door, P/S, P/B, A/C.  
Best Offer!  
Call after 5 p.m.  
661-5044

**JUNK CARS AND USED CARS WANTED**  
CALL ANYTIME  
748-2664 or 483-3303  
ASK FOR DAVE

**D J's TRUCKING**  
We Give \$10-\$200.  
Call Trucks, etc. to  
anywhere 24 Hours.  
Call 939-4351

**FRANKIE'S TOWING**  
24 Hour Service  
Junks Wanted!  
Call Trucks, etc.  
"Highest Prices Paid".  
Call 667-2192 7/26

**BILL'S AUTO WRECKERS**  
\$30 AND UP  
FOR CARS OR TRUCKS  
ANY CONDITION  
Belleville Pike, Mo. Arlington  
998-0966 1025 991-0081

**JERRY PANACCIONE**  
ALL CARPENTRY REPAIRS  
AND REMODELING.  
QUALITY WORK  
AT HONEST PRICES.  
CALL ME FOR FREE ESTIMATE.  
751-6769  
AFTER 5:30 P.M. 8/2

**CARPENTERS & BUILDERS**  
25 YEARS EXPERIENCE  
GENERAL REPAIRS  
NO JOB TOO SMALL  
751-3115 6/28

#### AUTOMOTIVE

**MOTORCYCLES**

**NEW MOPEDS**  
PRE-SEASON SPECIAL  
WERE \$449 - NOW  
**\$29900** COMPLETE  
BUY NOW SAVE GAS ALL SUMMER  
125 MPG  
401 BLOOMFIELD AVE. BLOOMFIELD - 429-7512 9/17

**MOPED-SUVEGA** Red,  
chrome fenders, new. Only  
190 miles. Must sell. \$250.  
Call 991-1446.

**MOPED SUVEGA** Red,  
chrome fenders, new. Only  
190 miles. Must sell. \$250.  
Call 991-1446.

**MOPED SUVEGA** Red,  
chrome fenders, new. Only  
190 miles. Must sell. \$250.  
Call 991-1446.

**MOPED SUVEGA** Red,  
chrome fenders, new. Only  
190 miles. Must sell. \$250.  
Call 991-1446.

**MOPED SUVEGA** Red,  
chrome fenders, new. Only  
190 miles. Must sell. \$250.  
Call 991-1446.

**MOPED SUVEGA** Red,  
chrome fenders, new. Only  
190 miles. Must sell. \$250.  
Call 991-1446.

**MOPED SUVEGA** Red,  
chrome fenders, new. Only  
190 miles. Must sell. \$250.  
Call 991-1446.

**MOPED SUVEGA** Red,  
chrome fenders, new. Only  
190 miles. Must sell. \$250.  
Call 991-1446.

**MOPED SUVEGA** Red,  
chrome fenders, new. Only  
190 miles. Must sell. \$250.  
Call 991-1446.

**MOPED SUVEGA** Red,  
chrome fenders, new. Only  
190 miles. Must sell. \$250.  
Call 991-1446.

**MOPED SUVEGA** Red,  
chrome fenders, new. Only  
190 miles. Must sell. \$250.  
Call 991-1446.

**MOPED SUVEGA** Red,  
chrome fenders, new. Only  
190 miles. Must sell. \$250.  
Call 991-1446.

**MOPED SUVEGA** Red,  
chrome fenders, new. Only  
190 miles. Must sell. \$250.  
Call 991-1446.

**MOPED SUVEGA** Red,  
chrome fenders, new. Only  
190 miles. Must sell. \$250.  
Call 991-1446.

**MOPED SUVEGA** Red,  
chrome fenders, new. Only  
190 miles. Must sell. \$250.  
Call 991-1446.

**MOPED SUVEGA** Red,  
chrome fenders, new. Only  
190 miles. Must sell. \$250.  
Call 991-1446.

**MOPED SUVEGA** Red,  
chrome fenders, new. Only  
190 miles. Must sell. \$250.  
Call 991-1446.

**MOPED SUVEGA** Red,  
chrome fenders, new. Only  
190 miles. Must sell. \$250.  
Call 991-1446.

**MOPED SUVEGA** Red,  
chrome fenders, new. Only  
190 miles. Must sell. \$250.  
Call 991-1446.

**MOPED SUVEGA** Red,  
chrome fenders, new. Only  
190 miles. Must sell. \$250.  
Call 991-1446.

**MOPED SUVEGA** Red,  
chrome fenders, new. Only  
190 miles. Must sell. \$250.  
Call 991-1446.

**MOPED SUVEGA** Red,  
chrome fenders, new. Only  
190 miles. Must sell. \$250.  
Call 991-1446.

**MOPED SUVEGA** Red,  
chrome fenders, new. Only  
190 miles. Must sell. \$250.  
Call 991-1446.

**MOPED SUVEGA** Red,  
chrome fenders, new. Only  
190 miles. Must sell. \$250.  
Call 991-1446.

**MOPED SUVEGA** Red,  
chrome fenders, new. Only  
190 miles. Must sell. \$250.  
Call 991-1446.

**MOPED SUVEGA** Red,  
chrome fenders, new. Only  
190 miles. Must sell. \$250.  
Call 991-1446.

**MOPED SUVEGA** Red,  
chrome fenders, new. Only  
190 miles. Must sell. \$250.  
Call 991-1446.

**MOPED SUVEGA** Red,  
chrome fenders, new. Only  
190 miles. Must sell. \$250.  
Call 991-1446.

**MOPED SUVEGA** Red,  
chrome fenders, new. Only  
190 miles. Must sell. \$250.  
Call 991-1446.

**MOPED SUVEGA** Red,  
chrome fenders, new. Only  
190 miles. Must sell. \$250.  
Call 991-1446.

**MOPED SUVEGA** Red,  
chrome fenders, new. Only  
190 miles. Must sell. \$250.  
Call 991-1446.

**MOPED SUVEGA** Red,  
chrome fenders, new. Only  
190 miles. Must sell. \$250.  
Call 991-1446.

**MOPED SUVEGA** Red,  
chrome fenders, new. Only  
190 miles. Must sell. \$250.  
Call 991-1446.

**MOPED SUVEGA** Red,  
chrome fenders, new. Only  
190 miles. Must sell. \$250.  
Call 991-1446.

**MOPED SUVEGA** Red,  
chrome fenders, new. Only  
190 miles. Must sell. \$250.  
Call 991-1446.

**MOPED SUVEGA** Red,  
chrome fenders, new. Only  
190 miles. Must sell. \$250.  
Call 991-1446.

**MOPED SUVEGA** Red,  
chrome fenders, new. Only  
190 miles. Must sell. \$250.  
Call 991-1446.

**MOPED SUVEGA** Red,  
chrome fenders, new. Only  
190 miles. Must sell. \$250.  
Call 991-1446.

**MOPED SUVEGA** Red,  
chrome fenders, new. Only  
190 miles. Must sell. \$250.  
Call 991-1446.

**MOPED SUVEGA** Red,  
chrome fenders, new. Only  
190 miles. Must sell. \$250.  
Call 991-1446.

#### AUTOMOTIVE

**MOTORCYCLES**

**NEW MOPEDS**  
PRE-SEASON SPECIAL  
WERE \$449 - NOW  
**\$29900** COMPLETE  
BUY NOW SAVE GAS ALL SUMMER  
125 MPG  
401 BLOOMFIELD AVE. BLOOMFIELD - 429-7512 9/17

**MOPED-SUVEGA** Red,  
chrome fenders, new. Only  
190 miles. Must sell. \$250.  
Call 991-1446.

**MOPED SUVEGA** Red,  
chrome fenders, new. Only  
190 miles. Must sell. \$250.  
Call 991-1446.

**MOPED SUVEGA** Red,  
chrome fenders, new. Only  
190 miles. Must sell. \$250.  
Call 991-1446.

**MOPED SUVEGA** Red,  
chrome fenders, new. Only  
190 miles. Must sell. \$250.  
Call 991-1446.

**MOPED SUVEGA** Red,  
chrome fenders, new. Only  
190 miles. Must sell. \$250.  
Call 991-1446.

**MOPED SUVEGA** Red,  
chrome fenders, new. Only  
190 miles. Must sell. \$250.  
Call 991-1446.

**MOPED SUVEGA** Red,  
chrome fenders, new. Only  
190 miles. Must sell. \$250.  
Call 991-1446.

**MOPED SUVEGA** Red,  
chrome fenders, new. Only  
190 miles. Must sell. \$250.  
Call 991-1446.

**MOPED SUVEGA** Red,  
chrome fenders, new. Only  
190 miles. Must sell. \$250.  
Call 991-1446.

**MOPED SUVEGA** Red,  
chrome fenders, new. Only  
190 miles. Must sell. \$250.  
Call 991-1446.

**MOPED SUVEGA** Red,  
chrome fenders, new. Only  
190 miles. Must sell. \$250.  
Call 991-1446.

**MOPED SUVEGA** Red,  
chrome fenders, new. Only  
190 miles. Must sell. \$250.  
Call 991-1446.

**MOPED SUVEGA** Red,  
chrome fenders, new. Only  
190 miles. Must sell. \$250.  
Call 991-1446.

**MOPED SUVEGA** Red,  
chrome fenders, new. Only  
190 miles. Must sell. \$250.  
Call 991-1446.

**MOPED SUVEGA** Red,  
chrome fenders, new. Only  
190 miles. Must sell. \$250.  
Call 991-1446.

**MOPED SUVEGA** Red,  
chrome fenders, new. Only  
190 miles. Must sell. \$250.  
Call 991-1446.

**MOPED SUVEGA** Red,  
chrome fenders, new. Only  
190 miles. Must sell. \$250.  
Call 991-1446.

**MOPED SUVEGA** Red,  
chrome fenders, new. Only  
190 miles. Must sell. \$250.  
Call 991-1446.

**MOPED SUVEGA** Red,  
chrome fenders, new. Only  
190 miles. Must sell. \$250.  
Call 991-1446.

**MOPED SUVEGA** Red,  
chrome fenders, new. Only  
190 miles. Must sell. \$250.  
Call 991-1446.

**MOPED SUVEGA** Red,  
chrome fenders, new. Only  
190 miles. Must sell. \$250.  
Call 991-1446.

**MOPED SUVEGA** Red,  
chrome fenders, new. Only  
190 miles. Must sell. \$250.  
Call 991-1446.

**MOPED SUVEGA** Red,  
chrome fenders, new. Only  
190 miles. Must sell. \$250.  
Call 991-1446.

**MOPED SUVEGA** Red,  
chrome fenders, new. Only  
190 miles. Must sell. \$250.  
Call 991-1446.

**MOPED SUVEGA** Red,  
chrome fenders, new. Only  
190 miles. Must sell. \$250.  
Call 991-1446.

**MOPED SUVEGA** Red,  
chrome fenders, new. Only  
190 miles. Must sell. \$250.  
Call 991-1446.

**MOPED SUVEGA** Red,  
chrome fenders, new. Only  
190 miles. Must sell. \$250.  
Call 991-1446.

**MOPED SUVEGA** Red,  
chrome fenders, new. Only  
190 miles. Must sell. \$250.  
Call 991-1446.

**MOPED SUVEGA** Red,  
chrome fenders, new. Only  
190 miles. Must sell. \$250.  
Call 991-1446.

**MOPED SUVEGA** Red,  
chrome fenders, new. Only  
190 miles. Must sell. \$250.  
Call 991-1446.

**MOPED SUVEGA** Red,  
chrome fenders, new. Only  
190 miles. Must sell. \$250.  
Call 991-1446.

**MOPED SUVEGA** Red,  
chrome fenders, new. Only  
190 miles. Must sell. \$250.  
Call 991-1446.

**MOPED SUVEGA** Red,  
chrome fenders, new. Only  
190 miles. Must sell. \$250.  
Call 991-1446.

**MOPED SUVEGA** Red,  
chrome fenders, new. Only  
190 miles. Must sell. \$250.  
Call 991-1446.

**MOPED SUVEGA** Red,  
chrome fenders, new. Only  
190 miles. Must sell. \$250.  
Call 991-1446.

**MOPED SUVEGA** Red,  
chrome fenders, new. Only  
190 miles. Must sell. \$250.  
Call 991-1446.

**MOPED SUVEGA** Red,  
chrome fenders, new. Only  
190 miles. Must sell. \$250.  
Call 991-1446.

**MOPED SUVEGA** Red,  
chrome fenders, new. Only  
190 miles. Must sell. \$250.  
Call 991-1446.

**MOPED SUVEGA** Red,  
chrome fenders, new. Only  
190 miles. Must sell. \$250.  
Call 991-1446.

**MOPED SUVEGA** Red,  
chrome fenders, new. Only  
190 miles. Must sell. \$250.  
Call 991-1446.

#### BUSINESS SERVICES

**ELECTRICIANS**

**BELLO'S ELECTRIC SERVICE**  
COMPLETE HOME WIRING  
WE SPECIALIZE IN:  
100 AMP 220 LINE  
FREE ESTIMATE  
CALL ANYTIME  
667-0915 8/14

**Call Us For Prompt Electrical Service**  
**D & D ELECTRIC**  
58 Belleville Ave.  
Belleville - 751-2782  
116-4270 10/25

**EXTERMINATORS**

**SWEENEY TERMITE & PEST CONTROL**  
CALL 482-8303 9/20

**TERMITES**  
\$199.95  
• ANY HOUSE  
• ANY SIZE  
10 YEAR GUARANTEE  
641-4722 8/23

**GARDEN STATE EXTERMINATORS**

**DO YOU HAVE ANY TERMITES, ROACHES, RODENTS, ANTS, ETC?**  
\$5. call any written estimate  
from any other company.  
AAA ECONOMY EXTERMINATORS.  
759-7519 9/20

**TERMITES**  
ANTS, ROACHES, SPIDERS, ETC.  
Termites can be one of the most  
serious causes of structural  
damage to your home & you  
may not become aware of a  
termite infestation for years.

**FREE INSPECTION**  
with verbal report or estimate.  
F.H.A. & V.A

# BUSINESS SERVICES

## LANDSCAPING

**BLAIRS GARDEN CENTER**  
652 Centre St., Nutley  
(Cor. Ridge Rd) 667-0991

**YOUR ONE STOP HEADQUARTERS FOR ALL YOUR...**

- ANNUALS • GERANIUMS, ETC.
- ROSES • EVERGREENS
- FLOWERING SHRUBS
- PERENNIALS

Mon. Thru Sat. 9.5 P.M.  
Sunday 9.3 P.M.

MASONRY MASONRY

751-3796 759-9404 751-5033

OUR SPECIALTY: Steps, Sidewalks, Patios, Fireplaces, Brick Veneering, Carpentry, Addition, Dormers, Paneling, Sheetrocking, Stucco.

NO JOB TOO BIG OR TOO SMALL!  
ALL MASONRY WORK  
"Before You Decide On A Job, Check Our Estimate First!"

# MASONRY

## "All Type Masonry Work"

- Brick • Block
- Cement • Patio
- Retaining Walls
- Waterproofing
- Sidewalks, etc.

No Job Too Big Or Too Small

751-7435 or 759-8233

# BROTHER'S CONTRACTORS

All Types Of Mason Work  
No Job Too Small Or Too Big  
Call For Your Free Estimate  
751-0991 after 6 p.m.

# MASON WORK

## All Types Of

- Concrete • Patios
- Sidewalks • Driveways
- Bricks • Blocks

\*Retaining Walls  
Full Insured Reasonable

LEE-MAR MASONRY CO.

935-6292  
933-8059

# MASON WORK

\*ALL KINDS OF CEMENT WORK  
\*NEW LOOK STONE FRONTS  
\*FREE ESTIMATES  
CALL AFTER 6 P.M.  
667-3338  
ASK FOR JOE

# SEWALKS • STEPS • DRIVEWAYS

RETAINING WALLS  
Balanced Retalls  
No Job Too Small

42-3592 242-0090  
DAYS EVES

# EAST ESSEX MASONRY & PAINTING COMPANY

"Complete Masonry Service"  
Free Estimates  
759-2219 or 478-1083

# \* CONCRETE & BRICK WORK

\* PATIOS • SIDEWALKS

\* WALLS

FREE ESTIMATES  
CALL TWENTYFOUR HOURS

998-3687

# MASONRY SPECIALISTS

Lafayette & Sons  
Over 2 Generations of Exp.  
Sewalks • Steps  
Brick Work • Plastering  
Retaining Walls • Patios

# TOP SOIL CRACKED STONE

Delivered, Reasonable  
667-3790 or 667-9293

# MISC. SERVICES

## WE REPAIR

- Washers & Dryers
- Refrigerators
- Freezers
- Air Conditioners

OR CROSBY SERVICE  
667-9278

# THOMAS MCSTAY

\* FURNITURE REPAIR  
\* TOUCH UP  
\* SCRATCHES  
\* BURNS

Call 991-7161

# ATTENTION!

As Of June, 1979  
Nifty Will Have Its Own  
CABLE TV STATION  
"CHANNEL 11"

For an additional \$1., you will  
appear repeatedly during  
the day for a period of one  
week for additional information,  
call:

667-3000

# BUSINESS SERVICES

## LANDSCAPING

**BLAIRS GARDEN CENTER**  
652 Centre St., Nutley  
(Cor. Ridge Rd) 667-0991

**YOUR ONE STOP HEADQUARTERS FOR ALL YOUR...**

- ANNUALS • GERANIUMS, ETC.
- ROSES • EVERGREENS
- FLOWERING SHRUBS
- PERENNIALS

Mon. Thru Sat. 9.5 P.M.  
Sunday 9.3 P.M.

MASONRY MASONRY

751-3796 759-9404 751-5033

OUR SPECIALTY: Steps, Sidewalks, Patios, Fireplaces, Brick Veneering, Carpentry, Addition, Dormers, Paneling, Sheetrocking, Stucco.

NO JOB TOO BIG OR TOO SMALL!  
ALL MASONRY WORK  
"Before You Decide On A Job, Check Our Estimate First!"

# MASONRY

## "All Type Masonry Work"

- Brick • Block
- Cement • Patio
- Retaining Walls
- Waterproofing
- Sidewalks, etc.

No Job Too Big Or Too Small

751-7435 or 759-8233

# BROTHER'S CONTRACTORS

All Types Of Mason Work  
No Job Too Small Or Too Big  
Call For Your Free Estimate  
751-0991 after 6 p.m.

# MASON WORK

## All Types Of

- Concrete • Patios
- Sidewalks • Driveways
- Bricks • Blocks

\*Retaining Walls  
Full Insured Reasonable

LEE-MAR MASONRY CO.

935-6292  
933-8059

# MASON WORK

\*ALL KINDS OF CEMENT WORK  
\*NEW LOOK STONE FRONTS  
\*FREE ESTIMATES  
CALL AFTER 6 P.M.  
667-3338  
ASK FOR JOE

# SEWALKS • STEPS • DRIVEWAYS

RETAINING WALLS  
Balanced Retalls  
No Job Too Small

42-3592 242-0090  
DAYS EVES

# EAST ESSEX MASONRY & PAINTING COMPANY

"Complete Masonry Service"  
Free Estimates  
759-2219 or 478-1083

# \* CONCRETE & BRICK WORK

\* PATIOS • SIDEWALKS

\* WALLS

FREE ESTIMATES  
CALL TWENTYFOUR HOURS

998-3687

# MASONRY SPECIALISTS

Lafayette & Sons  
Over 2 Generations of Exp.  
Sewalks • Steps  
Brick Work • Plastering  
Retaining Walls • Patios

# TOP SOIL CRACKED STONE

Delivered, Reasonable  
667-3790 or 667-9293

# MISC. SERVICES

## WE REPAIR

- Washers & Dryers
- Refrigerators
- Freezers
- Air Conditioners

OR CROSBY SERVICE  
667-9278

# THOMAS MCSTAY

\* FURNITURE REPAIR  
\* TOUCH UP  
\* SCRATCHES  
\* BURNS

Call 991-7161

# ATTENTION!

As Of June, 1979  
Nifty Will Have Its Own  
CABLE TV STATION  
"CHANNEL 11"

For an additional \$1., you will  
appear repeatedly during  
the day for a period of one  
week for additional information,  
call:

667-3000

# BUSINESS SERVICES

## MISC. SERVICES

**A-1 WE CLEAN UP ATTICS, GARAGES, CELLARS, ETC.**  
Nothing too big or too small.  
We also specialize in small demolition work. Contractors also welcome.  
Call 743-4491

**HANDYMAN WHY PAY MORE**

- Gutters • Roofs
- Windows • Painting
- Carpentry • Leaky Faucets
- Sinks • Stoves

CALL JOE • 759-0724

**BASEMENTS**

- YARDS • GARAGES
- CLEANED OUT

"We Clean Up Everything"  
Commercial & Residential

Call 743-4491

**LOCKSMITH Sales & Service**  
• On-site Work  
• Keys, Glass & Screens  
• Repaired

82 Franklin Ave., Nutley  
235-0858 Hours: 9-6p Mon. thru Fri. 9-5p Sat.

**MOVING & STORAGE**

751-3796 759-9404 751-5033

OUR SPECIALTY: Steps, Sidewalks, Patios, Fireplaces, Brick Veneering, Carpentry, Addition, Dormers, Paneling, Sheetrocking, Stucco.

NO JOB TOO BIG OR TOO SMALL!  
ALL MASONRY WORK  
"Before You Decide On A Job, Check Our Estimate First!"

# MASONRY

## "All Type Masonry Work"

- Brick • Block
- Cement • Patio
- Retaining Walls
- Waterproofing
- Sidewalks, etc.

No Job Too Big Or Too Small

751-7435 or 759-8233

# BROTHER'S CONTRACTORS

All Types Of Mason Work  
No Job Too Small Or Too Big  
Call For Your Free Estimate  
751-0991 after 6 p.m.

# MASON WORK

## All Types Of

- Concrete • Patios
- Sidewalks • Driveways
- Bricks • Blocks

\*Retaining Walls  
Full Insured Reasonable

LEE-MAR MASONRY CO.

935-6292  
933-8059

# MASON WORK

\*ALL KINDS OF CEMENT WORK  
\*NEW LOOK STONE FRONTS  
\*FREE ESTIMATES  
CALL AFTER 6 P.M.  
667-3338  
ASK FOR JOE

# SEWALKS • STEPS • DRIVEWAYS

RETAINING WALLS  
Balanced Retalls  
No Job Too Small

42-3592 242-0090  
DAYS EVES

# EAST ESSEX MASONRY & PAINTING COMPANY

"Complete Masonry Service"  
Free Estimates  
759-2219 or 478-1083

# \* CONCRETE & BRICK WORK

\* PATIOS • SIDEWALKS

\* WALLS

FREE ESTIMATES  
CALL TWENTYFOUR HOURS

998-3687

# MASONRY SPECIALISTS

Lafayette & Sons  
Over 2 Generations of Exp.  
Sewalks • Steps  
Brick Work • Plastering  
Retaining Walls • Patios

# TOP SOIL CRACKED STONE

Delivered, Reasonable  
667-3790 or 667-9293

# MISC. SERVICES

## WE REPAIR

- Washers & Dryers
- Refrigerators
- Freezers
- Air Conditioners

OR CROSBY SERVICE  
667-9278

# THOMAS MCSTAY

\* FURNITURE REPAIR  
\* TOUCH UP  
\* SCRATCHES  
\* BURNS

Call 991-7161

# ATTENTION!

As Of June, 1979  
Nifty Will Have Its Own  
CABLE TV STATION  
"CHANNEL 11"

For an additional \$1., you will  
appear repeatedly during  
the day for a period of one  
week for additional information,  
call:

667-3000

# BUSINESS SERVICES

## PAINTING

**PAINTING INTERIOR**

Peter 667-6524 Anthony 667-8429 5/10

**FRANK RUMEO**  
Painting/Decorator/  
Paperhanging  
Int. & Ext.  
Free Estimate  
No Job Too Small  
Fully Insured  
998-7046  
European Craftsmen

**PAINTER/HANDYMAN**  
"I'll do anything for you!"

- Int. & Ext. Painting
- Home Repairs
- Odd Jobs

MISTER J. 667-1494 5/6

**CALL NOW FOR SPRING RATES 997-1015**  
Fully Insured By Professionals 8/23

**JOHN MCNIGHT & SONS, INC.**  
ALUMINUM SIDING  
• ROOFING  
• PAINTING  
No Job Too Small Or Too Large  
69 PRICES IN 79!  
CALL 483-4235

**EAST ESSEX MASON & PAINTING COMPANY**  
"Complete Painting"  
Interior & Exterior  
Reas. Price Free Estimate.  
No Job Too Small Or Too Large.  
759-2219 or 478-1083

**D & M PAINTERS & DECORATORS**  
PROFESSIONAL PAPER HANGERS  
• SANITAS  
• FREE ESTIMATES  
• FULLY INSURED  
CALL 778-0246

**AIRLESS SPRAY PAINTING**  
• CLEAN  
• EFFECTIVE  
• 3000 LB. PRESSURE  
• APPLIED  
998-3048  
• FREE ESTIMATES  
• FULLY INSURED

**INTERIOR SPECIALIST!**  
• Painting  
• Paperhanging  
• BRIAN FINLAY  
CALL 661-1165

**VICTOR TIRONDOLA**  
Painting Contractor  
Interior & Exterior  
• PAINTING  
• GENERAL REPAIRS  
Closets  
Roofs, Leaders & Gutters  
Also Some Carpentry Work  
667-1893 10/11

**PROFESSIONAL HOUSE PAINTING & PAPERHANGING**  
Interior & Exterior  
Free Estimate - Fully Insured  
Reasonable & Reliable  
Satisfaction Guaranteed  
777-5658 9/7 473-7219

**PLUMBING & HEATING**

**FUEL CO FUEL OIL**  
C.O.D. C.O.D.  
MINIMUM 200 GALLONS  
24 HOUR  
BURNER SERVICE  
748-7011 4/21

**MARSON'S Plumbing and Heating Co.**  
N.J. State License No. 5401  
Complete Plumbing Service  
Kitchen & Bathroom Modernization  
GAS AND OIL HEAT  
WATER HEATERS  
Jerry Marson, Jr.  
Prop. 10/11

**751-3546**  
No Job Too Big or Too Small  
Serving Belleville-Nutley-Bloomfield  
Jerry Marson, Jr.  
Prop. 10/11

751-3796 759-9404 751-5033

OUR SPECIALTY: Steps, Sidewalks, Patios, Fireplaces, Brick Veneering, Carpentry, Addition, Dormers, Paneling, Sheetrocking, Stucco.

NO JOB TOO BIG OR TOO SMALL!  
ALL MASONRY WORK  
"Before You Decide On A Job, Check Our Estimate First!"

# MASONRY

## "All Type Masonry Work"

- Brick • Block
- Cement • Patio
- Retaining Walls
- Waterproofing
- Sidewalks, etc.

No Job Too Big Or Too Small

751-7435 or 759-8233

# BROTHER'S CONTRACTORS

All Types Of Mason Work  
No Job Too Small Or Too Big  
Call For Your Free Estimate  
751-0991 after 6 p.m.

# MASON WORK

## All Types Of

- Concrete • Patios
- Sidewalks • Driveways
- Bricks • Blocks

\*Retaining Walls  
Full Insured Reasonable

LEE-MAR MASONRY CO.

935-6292  
933-8059

# MASON WORK

\*ALL KINDS OF CEMENT WORK  
\*NEW LOOK STONE FRONTS  
\*FREE ESTIMATES  
CALL AFTER 6 P.M.  
667-3338  
ASK FOR JOE

# SEWALKS • STEPS • DRIVEWAYS

RETAINING WALLS  
Balanced Retalls  
No Job Too Small

42-3592 242-0090  
DAYS EVES

# EAST ESSEX MASONRY & PAINTING COMPANY

"Complete Masonry Service"  
Free Estimates  
759-2219 or 478-1083

# \* CONCRETE & BRICK WORK

\* PATIOS • SIDEWALKS

\* WALLS

FREE ESTIMATES  
CALL TWENTYFOUR HOURS

998-3687

# MASONRY SPECIALISTS

Lafayette & Sons  
Over 2 Generations of Exp.  
Sewalks • Steps  
Brick Work • Plastering  
Retaining Walls • Patios

# TOP SOIL CRACKED STONE

Delivered, Reasonable  
667-3790 or 667-9293

# MISC. SERVICES

## WE REPAIR

- Washers & Dryers
- Refrigerators
- Freezers
- Air Conditioners

OR CROSBY SERVICE  
667-9278

# THOMAS MCSTAY

\* FURNITURE REPAIR  
\* TOUCH UP  
\* SCRATCHES  
\* BURNS

Call 991-7161

# ATTENTION!

As Of June, 1979  
Nifty Will Have Its Own  
CABLE TV STATION  
"CHANNEL 11"

For an additional \$1., you will  
appear repeatedly during  
the day for a period of one  
week for additional information,  
call:

667-3000

# BUSINESS SERVICES

## PLUMBING & HEATING

**DON'T BE IN THE COLD!**  
Don't Have Leaking Pipes.  
Reach out for  
**MORBIT PLUMBING & HEATING CO.**  
"We are within your reach"  
372-3637 8/23

**WINDHEIM PLUMBING-HEATING**  
418 Franklin Ave., Nutley  
• GAS HEAT  
• HOT WATER HEATERS  
• DISPOSALS  
• DISHWASHERS  
• MODERNIZING  
BATHROOMS KITCHENS  
667-6886 3/31

**SUN GLO CORP.**  
ITALIAN BOCCIE BALLS  
BILLIARDS, RECREATIONAL  
SHUFFLEBOARDS &  
GAMES  
DOMESTIC & IMPORTED  
CUES  
GENUINE BELGIAN BALLS  
111 Hackett St., Belleville  
759-4474 8/9

**ROOFING & SIDING**

**BUSARDO ROOFING CO.**  
Roofing/Seamless Gutters  
Leaders & Chimney Work  
Fully Insured - Reasonable  
NO JOB TOO SMALL 9/9  
Call Anytime! 471-0417  
or after 5 p.m. 748-7330

**CENTURY HOME IMPROVEMENTS**  
100 SPECIAL  
• Roofing • Siding  
• Gutters  
• Alum. Windows & Doors  
Expert Installation  
All Work Guaranteed  
Free Estimates  
Deal Direct With Owner  
Call Ed Lawrence  
772-7942 10/18

**Piegario Roofing Co.**  
529 Kearny Ave.  
Kearny N.J.  
997-2029  
Hot tar roofs &  
Shingle Work 9/7

**HARRISON & SON OVER 50 YEARS**  
Industrial & Residential  
Commercial  
HOT ASPHALT ROOFING  
"SPECIALISTS"  
Shingles & Slate  
Gutters & Leaders  
991-3319 9/27

**DON LUBY ROOFING**  
Free Estimate  
Leaders & Gutters  
All Work Fully





### HELP WANTED

**PART TIME**  
Mornings or Evenings  
**\$4. per hour**  
**TELEPHONE**  
**SOLICITORS**  
991-7373 or 991-7337

**REAL ESTATE**  
**SALES PERSON**  
Looking for a change?  
JOIN OUR TEAM...  
We're active, We're successful.  
If you have a real estate  
license, Let's Talk!  
Ask for Mrs. Marshall  
759-6900

RECEPTIONIST @ FRIDAY

**PLUSH**  
Executive Search firm avails a person with your appearance, personality and ability to deal with lots of people contact. Light typing and varied office duties. Salary based on you. Can you fit in call 973-0100

### SECRETARIAL

Experienced office procedures - excellent typing skills - no stereo-company benefits. Active Clifton TV Agency.

Reply: NUTLEY SUN  
Box 72,  
Nutley, N.J. 07110

### SECRETARY/ADMINISTRATIVE

Experienced person with top skills for interesting, diversified position. Full responsibility for pleasant administrative office. Call 751-6531

### SWITCHBOARD OPERATORS

West Orange  
university service  
Morning shift 8-2 p.m.  
Afternoons 1-6 p.m.  
Experience necessary  
Call 731-6500

### TEACHER AID

For a day nursery.  
(Infants & Toddlers)

### CARETAKER

Hours 1pm - 6pm  
\$3. per hour  
Call Mr. Kar  
743-6898  
Between 3-6pm.

### TELLERS

(EXPERIENCED ONLY)

Billion Dollar First National State Bank of New Jersey has immediate opening for experienced tellers only. These positions are open full and part time.

We offer an excellent starting salary and benefits package.

PLEASE APPLY ANY WEEKDAY  
9:30 A.M. to 11 A.M.  
1:30 P.M. to 3 P.M.  
PERSONNEL DEPARTMENT

### FIRST NATIONAL STATE BANK OF NEW JERSEY

500 BROAD STREET  
NEWARK, N.J.



An Equal Opportunity Employer

### INSTRUCTIONS

#### REGISTRATION CONTINUOUS

ART INSTRUCTION  
OF ADULTS & CHILDREN

DRAWING  
Painting & Design  
PORTRAIT PAINTING  
From Model

MACRANE  
Beginners & Advanced  
SCULPTURE  
Beginners & Advanced  
BASKETRY  
RATES REASONABLE  
NUTLEY CENTER  
200 Chestnut St. Nutley  
661-2820

### ACCORDION LESSONS

IN YOUR HOME  
25 YEARS MUSIC  
EXPERIENCE  
CALL 759-8324

### The smartest place to start a diet.

For classes in your town  
call collect 201-757-7677

### Lean Line

Mind over matter  
Hartford, Conn. 06103  
Mon. - Sat. 9:15 a.m. - 5:15 p.m.

### BASS AND GUITAR LESSONS

IN YOUR HOME

CALL TOM  
751-5184

### LOST & FOUND

LOST PASSBOOK 307396,  
NJ Savings & Loan, Nutley,  
NJ. Payment stopped, return  
book to bank.

LOST PASSBOOK 308685,  
NJ Savings & Loan, Nutley,  
NJ. Payment stopped, return  
book to bank.

### REAL ESTATE

#### MORTGAGES & LOANS



PHONE 667-3231

### McGRANE MORTGAGE CO

Secondary Mortgage Loans

LICENSED PURSUANT TO THE  
SECONDARY-MORTGAGE LOAN ACT  
NO LEGAL FEES OR CLOSING FEES

254 KINGLAND STREET  
NUTLEY, N.J.

### BUSINESS OPPORTUNITIES

#### NUTLEY: DEU-CATERING REDUCED.

High traffic location. Gross \$2500 weekly. New price \$29.00.

NUTLEY: LIQUOR STORE & COCKTAIL LOUNGE.

Clifton/Nutley area. Gross \$350,000 yr. Just renovated. Call for details & appt.

NUTLEY: DEU-BAKERY.

Unique operation opposite shopping center. Owner will train. Package deal incl. land, new bldg, fixtures & stock. Wonderful Opportunity!

BLOOMFIELD: \$95,000. BRICK BUILDING.

Commercial or professional use. 87x100 lot w/parking. Building is 1200 sq. ft. w/central air, large basement, new work.

Call Realtor for details

### GLENWOOD REAL ESTATE AGENCY

905 Broad St., Bloomfield N.J. 429-7380

### BEVELLE BEAUTY PARLOR

One story building with parking. Asking \$15,000. Call Today! We have the key. Realtor.

### C. WALTER SEARLE

667-2577  
Eves. & Wknds 667-4155

### FOR RENT

### INDUSTRIAL BUILDING

For rent - Nutley area.

45' x 45' 24' ceiling

Stand alone building.

Immediately available, as is.

\$3. per sq. ft. Lease required.

For additional information, Call 667-007.

### STORE FOR LEASE

On first floor

Close to ShopRite

CENTRAL NUTLEY LOCATION

\$400. per month

CALL 667-2700

### BEVELLE

BUILDING SUITABLE FOR MACHINE SHOP. NICE AREA. 1200 SQ. FEET. \$250 PER MONTH.

### 150 BELMONT AVE.

Call 759-6196

### BEVELLE: 2 1/2 rooms.

modern. Available now, \$255 per mo. including h & hv. Call bet. 12-5P.M. 438-8083.

### CLIFTON

ATTRACTIVE 2 BEDROOM APT.

With fr. dining room & den, w/w carpeting. Near schools, shopping, Newark & N.Y. buses etc. very "QUIET" street with shady rear yard. \$290 + util.

471-2566

### NUTLEY: 4 ROOMS

Heat & hot water supplied. Modern couple. No children or pets. Available June 1st. Call between 6pm-7pm 667-2174

### NUTLEY: LOVELY MODERN

4 1/2 ROOMS, 2 bedrooms, \$260. utilities. Adultly call Aulien Broker, 9am-3pm.

### 4 ROOMS

Walking distance to Hoffman LaRoche. Available May 15th. No Children, No Pets.

Call 222-2757

### LANDLORDS!!

We have a list of tenants for every typical apartment. Let us help you find the family that fits yours.

NO FEE TO YOU

Tenants are qualified, have references and are checked. Call us with your vacancies.

### LIVING SPACE RENTALS

235-0800

### BLOOMFIELD

OFFICE SPACE

### MODERN

2500 SQUARE FEET

### JUST REMODELED

CALL

### MR. SPRANG

LIPTON'S

743-3300

### MOSCARA REALTORS

667-1732

### REAL ESTATE

#### MORTGAGES & LOANS



PHONE 667-3231

### McGRANE MORTGAGE CO

Secondary Mortgage Loans

LICENSED PURSUANT TO THE  
SECONDARY-MORTGAGE LOAN ACT  
NO LEGAL FEES OR CLOSING FEES

254 KINGLAND STREET  
NUTLEY, N.J.

### BUSINESS OPPORTUNITIES

#### NUTLEY: DEU-CATERING REDUCED.

High traffic location. Gross \$2500 weekly. New price \$29.00.

NUTLEY: LIQUOR STORE & COCKTAIL LOUNGE.

Clifton/Nutley area. Gross \$350,000 yr. Just renovated. Call for details & appt.

NUTLEY: DEU-BAKERY.

Unique operation opposite shopping center. Owner will train. Package deal incl. land, new bldg, fixtures & stock. Wonderful Opportunity!

BLOOMFIELD: \$95,000. BRICK BUILDING.

Commercial or professional use. 87x100 lot w/parking. Building is 1200 sq. ft. w/central air, large basement, new work.

Call Realtor for details

### GLENWOOD REAL ESTATE AGENCY

905 Broad St., Bloomfield N.J. 429-7380

### BEVELLE BEAUTY PARLOR

One story building with parking. Asking \$15,000. Call Today! We have the key. Realtor.

### C. WALTER SEARLE

667-2577  
Eves. & Wknds 667-4155

### FOR RENT

### INDUSTRIAL BUILDING

For rent - Nutley area.

45' x 45' 24' ceiling

Stand alone building.

Immediately available, as is.

\$3. per sq. ft. Lease required.

For additional information, Call 667-007.

### STORE FOR LEASE

On first floor

Close to ShopRite

CENTRAL NUTLEY LOCATION

\$400. per month

CALL 667-2700

### BEVELLE

BUILDING SUITABLE FOR MACHINE SHOP. NICE AREA. 1200 SQ. FEET. \$250 PER MONTH.

### 150 BELMONT AVE.

Call 759-6196

### BEVELLE: 2 1/2 rooms.

modern. Available now, \$255 per mo. including h & hv. Call bet. 12-5P.M. 438-8083.

### CLIFTON

ATTRACTIVE 2 BEDROOM APT.

With fr. dining room & den, w/w carpeting. Near schools, shopping, Newark & N.Y. buses etc. very "QUIET" street with shady rear yard. \$290 + util.

471-2566

### NUTLEY: 4 ROOMS

Heat & hot water supplied. Modern couple. No children or pets. Available June 1st. Call between 6pm-7pm 667-2174

### NUTLEY: LOVELY MODERN

4 1/2 ROOMS, 2 bedrooms, \$260. utilities. Adultly call Aulien Broker, 9am-3pm.

### 4 ROOMS

Walking distance to Hoffman LaRoche. Available May 15th. No Children, No Pets.

Call 222-2757

### LANDLORDS!!

We have a list of tenants for every typical apartment. Let us help you find the family that fits yours.

NO FEE TO YOU

Tenants are qualified, have references and are checked. Call us with your vacancies.

### LIVING SPACE RENTALS

235-0800

### BLOOMFIELD

OFFICE SPACE

### MODERN

2500 SQUARE FEET

### JUST REMODELED

CALL

### MR. SPRANG

LIPTON'S

743-3300

### MOSCARA REALTORS

667-1732

### REAL ESTATE

#### FOR SALE

#### BLOOMFIELD \$44,900 COLONIAL

YETS - NO DOWN PAYMENT, FHA - LOW DOWN

Has living rm, dining rm, 2 large BRs & new tile bath, 2 car gar VA/FHA O.K. to qualified buyer.

#### BLOOMFIELD \$59,900 2 FAMILY

With 3 incomes, mod apt, new 220 elec. Just painted. 3 rooms & 1 1/2 bath, vacant. Excellent Investment Property!

#### BEVELLE

#### CUSTOM DUTCH COLONIAL

Graylock arbor, 1st fl. 5 large rms incl living rm w/frpl, dining rm, ultra mod kit, family rm, bedrm & mod tile bath. 2nd fl. 2 large bedrms & mod bath. Asking \$60's. Widow must sell.

#### BEVELLE COLONIAL MOTHER/DAUGHTER

New listing! Shuco exterior, has large living rm w/frpl, formal dining rm, ultra mod kit, 4 BRs & tile bath plus separate 3 room mod apt. for mother. #3 School. Priced \$60's for quick sale.

#### BLOOMFIELD

#### COLONIAL - ST. VAL'S

NEW LISTING! LG fr, formal DR, tile kit, 4 BRs & tile bath, fr. inc. rm. Asking \$70's. Reduced \$50's

#### GLENWOOD REAL ESTATE AGENCY

905 Broad St., Bloomfield, N.J. 429-7380

#### NUTLEY

#### CONTEMPORARY

Natural Cedar Beauty featuring 3 extra large bedrooms, 2 1/2 baths, central air, 4 skylights, living room with fireplace, family room plus more. Asking \$149,900.

#### ALADDIN REALTY

Tom Viola, Realtor 235-0550

#### NUTLEY

#### 2 FAMILY STARTER

4 & 4 mod. bath, separate heating units. Mid \$50's.

#### COLONIAL

Beautiful lot in lovely location, eat in kit, closed porch, 1 1/2 baths.

Realtor: B. Cook 1/a

#### William J. Jernick Jr.

301 Franklin Ave, Nutley 667-1000  
Eves/Wknds call C. Redmond 667-1888

#### NUTLEY

#### MAKE AN OFFER

On this 1 BR Colonial: Ideal location close to schools - has 2 full baths, TV rm on 1st fl. 2 more rooms on 3rd fl. Perfect for handyman with large family.

#### BEVELLE

#### JUST REDUCED

Good location, large living rm w/frpl, dining rm, BK & TV rm, 4 BRs, 1 1/2 finished basement. Priced To Sell in Mid \$60's. Call Realtor.

CARL A. ORECHIO AGCY

#### BEVELLE

#### JUST REDUCED

Good location, large living rm w/frpl, dining rm, BK & TV rm, 4 BRs, 1 1/2 finished basement. Priced To Sell in Mid \$60's. Call Realtor.

CARL A. ORECHIO AGCY

#### BEVELLE

#### "BUY OF THE WEEK"

ONE FAMILY COLONIAL Across from golf course. In nice, move-in cond. - Alum siding, 7 rms liv, rm, din, rm, 3 bedrooms, lg mod, split-inch with terracotta, cabinets & dishwasher. Painted den or TV rm, 1 1/2 mod tile baths: Closed in front porch with stone foyer & lg sliding dr, close. Completely fr. bsmt with elec. frpl, fenced in yard, with above gr. 18' pool & equip. Some extras incl. outdoor gas grill, window A/C, attic fan & w/c corp, washer, dryer & much more.

Priced to sell at only \$59,900 Call 759-2436

#### NUTLEY

#### \$69,500

YANTACAW COLONIAL On quiet tree lined street. 8 rms, frpl. Beautiful garden



# Allen's 'Don't Drink the Water' quenches the thirst for comedy

By Donna Abate

Citizens need not be alarmed by the circulation throughout town of signs proclaiming "Don't Drink The Water." No, we are not facing a pollution emergency, but rather Nutley Little Theatre's latest production which premiered last Friday night. "Don't Drink The Water," which



**RESTAURANT**

*"Serving the finest in Italian and Continental Cuisine"*

Your Host: Michael Servidio  
Rte. 46W, Pine Brook, N.J. 227-686

**Golden Jade**

Chinese Open Kitchen

**TAKE OUT ORDERS 7 DAYS**

Cantonese & Mandarin Style

11:30-9:30 p.m. Daily Tel: 751-7708/7712  
Grand Union Shopping Center 366 Main St. Belleville

Reserve now for our special Mother's Day Dinner with everything included!

**The Fountain's Mother's Day Gala Buffet**

**APPETIZERS AND SALADS**  
 Bean Salad, Tossed Salad, Hot Pepper Salad, Chopped Chicken Liver, Fresh Fruit Salad, Sliced Tomatoes, Pepperoni, Salmi Cubed Cheese, Pimiento, Olives, Celery, Pickled Mushrooms, Calamari Salad, Scungilli Salad, Mussels, Assorted Relishes

**BARB**  
 Lasagne - Home Made Gnocchi alla Napoletana - Ziti Bolognese

**ENTREES**  
 Baked Virginia Ham - Roast Top Sirloin of Beef - Chicken Cacciatore - Pastr - Roast Stuffed Eggplant - Tripe - Roast Pig w/ Dressing - Roast Leg of Lamb - Sausage with Peppers - Veal Cutlet Parmigiana

**VEGETABLES**  
 Cauliflower au Gratin - String Beans Marinara - Yellow Squash - Oven Brown Potatoes

**DESSERTS**  
 Apple Pie - Ice Cream - Rum Cake - Cheese Cake Jello - Torte - Rice Pudding - Coconut Custard Pie - Chocolate Layer Cake - Strawberry Short Cake

**BEVERAGES**  
 Coffee, Tea, Milk, Santa, Espresso  
 ASSORTED NUTS AND DINNER MINTS

**the Fountain**  
 RESTAURANT & LOUNGE  
 46 WATKINS AVENUE BELLEVILLE  
 751-3800

**\*\$8.50 Per Person**  
**Children Under 6 - \$3.00**  
**GRATUITY AND TAX NOT INCLUDED**

Serving The Finest In Italian Cuisine

Phone: 483-3980

**BIASE'S**  
 RESTAURANT & COCKTAIL LOUNGE  
 451 Bloomfield Ave., Newark, N.J.

**Mother's Day Menu**  
 Assorted Salads  
 Chicken Soup and Stuffed Shells

Choice of:  
 Veal Parmigiana • Leg of Lamb  
 Broiled Filet of Sole • Roast Beef  
 Breast of Capon  
 Coffee and Dessert.

\*\$8.50 plus tax and gratuities  
 Children Under 8 • \$4.50

Appearing in Nellie's Corner  
**U.S. and Company**  
 Luncheon Served Daily 12-3 p.m.

will be presented 8 p.m. tomorrow and Saturday at the NLT barn, is a hilarious comedy written by the master of that form, Woody Allen, in his younger days. The plot centers around a vacationing family whose innocent snapshots behind the Iron Curtain convince the authorities that they're foreign spies. The family takes refuge in the local American embassy which, they discover, is haven mainly for incompetents and lunatics.

The play is chock-full of early Woody Allen humor — quick puns, ridiculous characterizations and far-fetched plot — all wrapped together under a bit of slapstick. Though slow in parts, the play provides many a hearty laugh. Besides the Allen humor, the play's strengths are its variety of characters and their continual unpredictability.

This is not what you'd call vintage Allen. In spots, the dialogue bears an uncomfortably close resemblance to the forced zaniness of Mel Brooks. However, the play is more than redeemed by the classic Allen quips, the clever self-mockery, the sudden, hilarious jaunts into free-association unreality that mark Woody's later, and better, works.

The all-around show-stopper is Leon Cohen as Walter Hollander, the Newark caterer who always seems to have an answer, if not a solution, for everything. Cohen, in his first NLT production, executes the funniest lines in the play with superb style and timing. With a voice that makes him sound like a latter-

day Groucho Marx, Cohen commands the attention of every ear in the audience.

Bill Timoney as Axel Magee, the failure son of the American ambassador, is an extremely agile comic, bouncing off the walls as he nervously makes a fumbled play for Susan Hollander, portrayed nicely by Gail Rog. The romantic scene between the couple is a page out of the now familiar, but still funny, Allen-Keaton book. In falling for each other, the couple falls over everything else too.

C.J. Morgan, in his first NLT production, also keeps the audience laughing with his portrayal of Father Drobney, a crazy priest with a fetish for card tricks. He's another stock Allen character, Woody having a thing for jokes about religion.

Guy Tiente as Hatami, the embassy's Japanese chef, is marvelous and so is Ed De Simon, playing the ambassador's aid who thinks he's the Wright brothers after being thumped in the head by a protester's brick.

Another performer making a debut at Nutley Little Theatre in "Don't Drink The Water" is Tangerine, who portrays a magician's rabbit in danger of becoming a full-course meal. Tangerine, with agent John Cavanagh, made her acting debut in the Nutley High School production of "The Effect of Gamma Rays on Man-in-the-Moon Marigolds." This latest role should allow her to ask for — and get — as many carrots as she wants.

of the Australians' contribution to winning World War I and its capture of the Holy Lands. "Chips" Rafferty gained international prominence in what was his first screen appearance.

The two film classics will be shown at the Essex Film Club headquarters, 263 Harrison St., Nutley.

## Movie club showing rare films Saturday

Two film classics from "down under" will be screened by the Essex Film Club beginning 8:30 p.m. Saturday when the motion pictures, "In the Wake of the Bounty" and "Forty Thousand Horsemen," will be shown.

Both films were directed by Australian Charles Chauvel, and the 1933 "In the Wake of the Bounty" was the first film in which Errol Flynn appeared. The film club owns the only known print of this movie.

Flynn was first considered for the role of Christian in MGM's 1935 "Mutiny on the Bounty," but the part eventually went to Clark Gable, the company's top star at the time. "Forty Thousand Horsemen" was made in the 1940s and produced on a grand scale with the Australian Army using its contingent of horsemen for the filming. It is a story

**'Oedipus Rex' at Seton Hall 8 tomorrow**

The Seton Hall Preparatory School Drama Society will present its production of "Oedipus the King" 8 p.m. tomorrow in the Little Theater of Walsh Auditorium on the Seton Hall University campus. Tickets will be available at the door.

Harry Dawson, English department-chairman at the South Orange school, will direct the ancient tragedy by Sophocles dealing with the question of fate. The play tells the story of the King of Thebes who is commanded by an oracle of Apollo to find the murderer of the previous king.

Michael Calabrese of Irvington will star as Oedipus. The chorus will consist of preppers and girls from area high schools.

**DON'S 21**  
 RESTAURANT  
 Appearing May 16, 17, 18  
**AL MARTINO**  
 2 Shows Fri., May 18  
 Reserve Now  
 Make Your Reservations Now For  
**Mother's Day**  
 Call 622-6221

MC CARTER HIGHWAY & BRIDGE ST. NEWARK

**The Belleville Times/News**  
 777 Bloomfield Avenue  
 Nutley, N.J. 07110

1 year gift subscription \$12.00  
 Senior Citizens \$7.00

Please send a gift subscription of The Belleville Times/News by mail to:

Name (Please Print) \_\_\_\_\_  
 Address \_\_\_\_\_  
 City \_\_\_\_\_ State \_\_\_\_\_ Zip \_\_\_\_\_

My check is enclosed in the amount of \$ \_\_\_\_\_  
 Please have my gift read from:

Name (Please Print) \_\_\_\_\_  
 Address \_\_\_\_\_  
 City \_\_\_\_\_ State \_\_\_\_\_ Zip \_\_\_\_\_

**THE NEW GIOVANNI'S**  
 180 Franklin Ave. (Next to Dante's Bakery)  
 ITALIAN RESTAURANT & PIZZERIA  
 Specializing in Fine Italian Cooking

**FREE DELIVERY 6 DAYS A WEEK**

**667-6477**  
 We Deliver 6 Days A Week

Ask About Our Catering Service

**MARTHA'S VINEYARD**  
 Ristorante Italiano  
 780 Route 3 West Clifton  
 (opp. Hoffmann-LaRoche)

Enjoy Mother's Day Dinner with us  
 Special holiday dinners  
 Also many Italian Specialties available from our a-la-carte menu

Seating 1:30  
 3:30  
 6:30 p.m.

For details & information phone 779-3500

**DENKYMANIA IS COMING**  
**CHANNEL T CABLEVISION PREMIERE**

**Saturday, May 19th 8 p.m.**

**Nutley High School Auditorium Franklin Ave.**

**Something For Everyone!**  
 featuring a  
 Disco  
 Dance Contest for Cash Prizes  
 Plus  
 A Concert featuring

\*\*\*\*\*  
 \* **BILLY JO SANS** \*  
 \* **JAMES GRIER** \*  
 \* **DON OLDHAM** \*  
 \* **SOUL SIMONE** \*  
 \*\*\*\*\*

Tickets \$6.00 Available at  
 Nutley Sweet Shop  
 Halfpenny Pub  
 Maggie's Garter

For Further Information Call:  
**235-1259**



# ShopRite has... the PRICES!

## The MEATing Place®

**SEMI BONELESS**  
**BEEF CHUCK POT ROAST** **\$1.77** lb.  
USA CHOICE  
 CUT FROM BEEF SHOULDER  
**LONDON BROIL** **\$2.27** lb.  
USA CHOICE  
**Pot Roast** **\$1.97** lb.  
BONELESS  
**Beef Chuck Steak** **\$1.47** lb.  
1ST CUT  
**Beef Ground Chuck** **\$1.77** lb.  
ANY SIZE  
**Beef Cube Steak** **\$2.27** lb.  
CHUCK CUT  
**Pork Butts** **\$1.77** lb.  
SMOKED ShopRite (WATER ADDED)  
**STEAK TONIGHT, FROZEN, NO THAWING. COOKS IN MINUTES**  
**Beef Steak** **\$2.39** lb.  
FLAKED & FORMED TWO 8-OZ. STEAKS  
**Onion Steak** **\$2.39** lb.  
TWO 8-OZ. STEAKS  
**Sandwich Steak** **\$2.39** lb.  
FOUR 4-OZ.  
**Pepper Steak** **\$2.39** lb.  
TWO 8-OZ. STEAKS  
**Beef Steak** **\$4.38** lb.  
FOUR 4-OZ. STEAKS

**GOVERNMENT GRADE "A" FROZEN WITH RIB CAGE**  
**TURKEY BREAST** **\$1.19** lb.  
4 TO 8 LBS. AVERAGE  
**Turkey Wings** **69¢** lb.  
FROZEN GRADE "A"  
**Drumsticks** **69¢** lb.  
TURKEY FROZEN GRADE "A"  
**Boneless Breast** **\$2.17** lb.  
CHICKEN SKELETONLESS  
**Chicken Breast** **\$1.17** lb.  
WHOLE WITH RIB CAGE  
**Turkey Pan Roast** **\$3.18** lb.  
WHOLE DARK MEAT  
**Turkey Pan Roast** **\$3.48** lb.  
ALL WHITE MEAT

**WHOLE WITH THIGHS**  
**CHICKEN LEGS** **77¢** lb.  
ShopRite WATER ADDED  
**SMOKED HAM** **97¢** lb.  
SHANK PORTION BUTT PORTION  
**Pork Chops** **\$1.87** lb.  
CENTER CUT RIB CUT  
**Pork Loin** **\$1.37** lb.  
FOR BAR-B-Q RIB END  
**Pork Chop Combo** **\$1.37** lb.  
LOW PORTION 5-11 CHOPS  
**Boneless Pork** **\$1.87** lb.  
LOW ROAST RIB PORTION  
**Leg of Lamb** **\$1.59** lb.  
OVEN READY  
**Lamb Chops** **\$1.59** lb.  
Spring Lamb SHOULDER BLADE CUT  
**CHICKEN CLASSICS BONELESS CHICKEN BREAST**  
**Italian Style** **\$2.59** lb.  
MILANESE  
**Stuffed Breast** **\$2.59** lb.  
PEPPERIDGE FARM  
**Thin Sliced** **\$2.59** lb.  
USE AS VEAL CUTLET  
**Hawaiian Style** **\$2.59** lb.  
DELICIOUS

## The Produce Place

**CALIFORNIA LUSCIOUS STRAWBERRIES** **59¢** pint  
**Sweet Corn** **89¢** doz.  
FLORIDA FARM FRESH  
**Tender Romaine** **39¢** doz.  
A NATURAL FOR ALL SALADS  
**Yellow Onions** **49¢** 3-lb. bag  
U.S. #1 GRADE  
**Crisp Cabbage** **19¢** lb.  
GOOD SOURCE OF "VITAMIN C"  
**Pascal Celery** **49¢** doz.  
"30 SIZE" LOW IN CALORIES  
**Grapefruit** **4.11** doz.  
"27 SIZE" GREAT FOR VITAMIN C AND THE WAIST LINE  
**Jaffa Oranges** **6.89¢** doz.  
IMPORTED LARGE "88 SIZE"  
**Oranges** **10.99¢** doz.  
FLORIDA "EXTRA FLAVOR" IN THE FRESH JUICY FOR SUE  
**Red Grapes** **79¢** lb.  
IMPORTED DELICIOUSLY REFRESHING  
**Delicious Apples** **49¢** lb.  
RED OR GOLDEN "10-12" SIZE WASH STATE OF THE ART  
**Imported Apples** **49¢** lb.  
GRANNY SMITH TART & JUICY  
**Crisp Carrots** **3.89¢** 3 cuttings  
SWEET WITH A NATURAL SWEET

## The Appy Place

**MAJESTY DANISH IMPORTED HAM** **79¢** 1/2-lb.  
**Swiss Cheese** **\$1.29** 1/2-lb.  
IMPORTED FINLAND  
**White's Bologna** **59¢** 1/2-lb.  
STORE SLICED

## The Grocery Place

**100% JUICE DRINK IN GOLD OR PURPLE**  
**JUICY JUICE** **69¢** 1-qt. 14 oz. can  
**Vegetarian Beans** **4.99¢** 1-lb. can  
HEINZ  
**Stewed Tomatoes** **\$1.19** 1-lb. can  
DEL MONTE  
**Relishes** **39¢** 9-oz. jar  
HEINZ SWEETENED/ HOT DOG/HAMBURGER  
**Cake Mixes** **59¢** 1-lb. 2-1/2 oz. box  
ALL VAR. SUPERMOIST BETTY CROCKER  
**Chock Full O'Nuts** **\$1.89** 1-lb. can  
COFFEE  
**ShopRite Tea Bags** **99¢** box of 100  
**Pork & Beans** **5.99¢** 5-lb. can  
ShopRite  
**Keg O' Ketchup** **89¢** 2-lb. jar  
HEINZ  
**Crisco Shortening** **\$1.99** 3-lb. can  
**All Dishwash** **\$1.49** 3-lb. 2 oz. box  
DETERGENT  
**Cascade** **\$1.99** 4-lb. 1 oz. box  
DISHWASHER DETERGENT  
**Ivory Liquid** **\$1.29** qt. jar  
DISH DETERGENT  
**Relishes** **\$1.19** 3-10-oz. jar  
VLASIC SWEETENED/ HOT DOG/HAMBURGER  
**Salad Dressing** **79¢** 16-oz. jar  
ALL VAR. SEVEN SEAS

## The Plant Place

**ASSORTED COLORS POTTED MUMS\*** **\$2.49** 5" pot 3 cuttings  
**\$3.69** 6" pot 4 cuttings  
AVAILABLE IN STORES THAT NORMALLY CARRY PLANTS

## The Grade A Fish Market

**\*FRESH SELECT FILLET OF FLOUNDER** **\$2.59** lb.  
"FRESH SEAFOOD AVAILABLE MON.-MAY 7, 1979, IN STORES WITH SEAFOOD DEPTS."  
**\*Scrod Cod** **\$1.99** lb.  
FRESH FILLET  
**Fish Cakes** **\$1.59** 2-lb. can  
FROZEN BREADED COMMODORE

## Health & Beauty Aids

**WHEAT GERM OIL & HONEY FABERGE SHAMPOO** **\$1.09** 15-oz. bottle  
**Conditioner** **\$1.09** 15-oz. bottle  
FABERGE WHEAT GERM OIL & HONEY  
**Hair Color** **\$1.99** 4-oz. box  
NICE & EASY

## General Merchandise

**DOUBLE HIBACHI** **\$3.99** 1-lb. x 17-1/2 in.  
SOME ASSEMBLY REQUIRED  
**Chaise Lounge** **\$8.99** 74 in. x 24 in.  
36-POSITION ASST. COLORS  
**Motor Oil** **99¢** 2-qt. can  
MOBIL SPECIAL 10W30

## The Pharmacy Place

**B-D PLASTIPAK MICROFINE 1cc-10-100 INSULIN SYRINGES** **\$10.99** box of 100  
**Insulin Syringe** **\$10.99** 100  
1 cc-10-100 (100 BOUTANGE USP)  
**\*Orinase** **\$8.99** 100  
TABULETS 0.5gm (100 BOUTANGE USP)

## ShopRite has... A Candy Carnival

**Hershey Bars** **99¢** 8-oz. bar  
GIANT ALL VARIETIES  
**Charms Pops** **49¢** 7-1/2 oz. pkg.  
BLOW OR JUNIOR POPS OR FUN BALL POPS  
**Jumbo Block** **79¢** 7.5-oz. pkg.  
PLANTER'S 6-PACK  
**Chunky Bars** **49¢** 4-oz. bar  
ALL VARIETIES CHOCOLATE  
**Chuckles Candy** **\$1.19** 8-oz. pkg.  
ALL VARIETIES  
**Baby Ruth** **79¢** 10-oz. jar  
OR BUTTERFINGERS 6-PACK

## The Dairy Place

**TROPICANA (CARTON) ORANGE JUICE** **\$1.09** 1/2-gal. cart.  
**ShopRite Singles** **\$1.49** 16-oz. pkg.  
READY WRAPPED  
**Cottage Cheese** **\$1.29** 2-lb. can  
ShopRite SWEETENED LITE  
**Cottage Cheese** **79¢** 1-lb. can  
BREAKSTONE  
**Sundae Yogurt** **89¢** 3-oz. cup  
FRUIT FLAVORED ShopRite  
**Margarine** **69¢** 1-lb. pkg.  
PARKAY REGULAR QUARTERS  
**Margarine** **49¢** 1-lb. pkg.  
NUCDA REGULAR QUARTERS

## The Deli Place

**MIRA CURE ARMOUR BACON** **\$1.29** 1-lb. pkg.  
**Armour Franks** **\$1.19** 1-lb. pkg.  
REGULAR BEEF  
**Canned Ham** **\$5.99** 3-lb. can  
PATRICK CUDAHY  
**Bologna** **\$1.29** 12-oz. pkg.  
REGULAR/BEEFMEAT OSCAR MAYER  
**Beef Franks** **\$1.49** 1-lb. pkg.  
OSCAR MAYER OR WEINERS  
**Chicken Franks** **89¢** 1-lb. pkg.  
COLONIAL  
**Claussen Pickles** **\$1.19** qt. jar  
REGULAR OR ICICLE

## Fresh Bake Shoppe

**FRESH BAKED FRENCH BREAD** **4.99¢** 8-oz. loaf  
ShopRite

## The Ice Cream Place

**ShopRite ASSORTED FLAVORS ALL NATURAL ICE CREAM** **\$1.59** 1/2-gal. cont.  
ALL NATURAL VANILLA

## The Snack Place

**Potato Chips** **75¢** 12-oz. bag  
ShopRite REGULAR OR KRINKLE CUT

## The Frozen Foods Place

**ShopRite "GRADE A" ORANGE JUICE** **3.11** 6-oz. cans  
**Green Beans** **89¢** 3-oz. can  
CUT OR FRENCH ShopRite "GRADE A"  
**Cakes** **89¢** 13-1/2 oz. pkg.  
PEPPERIDGE FARM SUPREME ASST. VAR.  
**Main Dishes** **\$1.49** 2-lb. pkg.  
ON COR 2 LB. ALL VAR. INCL. BEEF

### ShopRite Coupon

One (1) 7-oz. pkg. ShopRite Snacks & Pretzels  
**ShopRite PARTY MIX** **49¢** WITH THIS COUPON  
Coupon good at any ShopRite market. Limit one per family. Effective Sun. May 6 thru Sat. May 12, 1979.

### ShopRite Coupon

One (1) 8-oz. box ShopRite Raisins or Date Oatmeal or  
**RAISIN COOKIES** **49¢** WITH THIS COUPON  
Coupon good at any ShopRite market. Limit one per family. Effective Sun. May 6 thru Sat. May 12, 1979.

### ShopRite Coupon

One (1) 20-lb. bag ShopRite  
**CHARCOAL BRIQUETS** **\$2.29** WITH THIS COUPON  
Coupon good at any ShopRite market. Limit one per family. Effective Sun. May 6 thru Sat. May 12, 1979.

### ShopRite Coupon

One (1) 7-oz. can, in water,  
**3 DIAMOND SOLID WHITE TUNA** **79¢** WITH THIS COUPON  
Coupon good at any ShopRite market. Limit one per family. Effective Sun. May 6 thru Sat. May 12, 1979.